

THERMOTOLERANCE IN GOSSYPIUM HIRSUTUM

Except where reference is made to the work of others, the work described in this thesis is my own or was done in collaboration with my advisory committee. This thesis does not include proprietary or classified information.

Samuel Lee Frederick

Certificate of Approval:

Narendra K. Singh
Professor
Biological Sciences

Robert D. Locy, Chair
Professor
Biological Sciences

David B. Weaver
Professor
Agronomy and Soils

Joe F. Pittman, Interim Dean
Graduate School

THERMOTOLERANCE IN GOSSYPIUM HIRSUTUM

Samuel Lee Frederick

A Thesis

Submitted to

the Graduate Faculty of

Auburn University

in Partial Fulfillment of the

Requirements for the

Degree of

Master of Science

Auburn, Alabama
December 15, 2006

THERMOTOLERANCE IN GOSSYPIUM HIRSUTUM

Samuel Lee Frederick

Permission is granted to Auburn University to make copies of this thesis at its discretion, upon request of individuals or institutions and at their expense. The author reserves all publication rights.

Signature of Author

Date of Graduation

VITA

Samuel Lee Frederick, son of Eugene W. and Peggie S. Frederick, was born on February 11, 1978 in Birmingham, Alabama. He graduated from Erwin High School in 1996. In the fall of 1996 he entered the Samford University School of Music, where he earned a Bachelor of Music degree in 2000. He began his graduate studies in Molecular Biology at Auburn University in August 2004. Sam became a Graduate Teaching Assistant (GTA) immediately, teaching Principles of Biology classes to undergraduate students. He continued work as a GTA each semester through the spring of 2006. Sam is married to Dr. Lisa T. Frederick.

THESIS ABSTRACT
THERMOTOLERANCE IN GOSSYPIUM HIRSUTUM

Samuel L. Frederick

Master of Science, December 15, 2006
(B.M., Samford University, 2000)

80 Typed Pages

Directed by Robert D. Locy

Heat and drought are major factors that affect the annual cotton yield. Cotton farmers are always looking for plants that are more thermotolerant and drought tolerant to increase the yield. These characteristics can be studied in many ways. This study focuses on measuring chlorophyll fluorescence in *Gossypium hirsutum* as a means to evaluate the desired characteristics of heat and drought tolerance. ‘Deltapine DP 90’ (DPL 90), a widely grown adapted cultivar was used as a control in this study.

1762 accessions of *G. hirsutum* were obtained from the USDA SPARS cotton germplasm collection in College Station, Texas. Four to five seeds of each accession were planted in a single pot, with three to four pots per accession. These plants were grown for at least four weeks in a greenhouse.

Leaf samples were collected from each accession. Chlorophyll fluorescence screening at increasing temperatures was performed on leaf samples of each accession. Plants that excelled in chlorophyll fluorescence were submitted to a traditional whole plant screening process under heat stress conditions.

Chlorophyll fluorescence testing was determined to be an effective way to find cotton plants with increased thermotolerance and drought tolerance. However, all cotton plants that perform well in chlorophyll fluorescence testing do not necessarily exhibit the improved characteristics desired.

ACKNOWLEDGEMENTS

The author would like to thank Dr. Robert Locy for his guidance throughout this project. Thanks are also due to Dr. Narendra Singh and Dr. David Weaver for their advice and support. Dr. Weaver graciously supplied the cottonseeds used in this project. This project would not be possible without the love and support of the author's wife, Dr. Lisa T. Frederck, and mother Mrs. Peggie S. Frederick.

Style manual used: Auburn University Guide To Preparation And Submission Of Theses
And Dissertations 2005

Computer program used: Microsoft Word® for Windows

TABLE OF CONTENTS

LIST OF TABLES	x
LIST OF FIGURES	xi
I. INTRODUCTION.....	1
II. REVIEW OF LITERATURE	3
III. MATERIAL AND METHODS	11
Plant Material	
Plant Growth	
Chlorophyll Fluorescence Screening of Cotton Germplasm	
Whole Plant Screening of Elite Accessions Identified Via Chlorophyll Fluorescence	
IV. RESULTS	15
Chlorophyll Fluorescence Screening of Cotton Germplasm	
Whole Plant Screening of Elite Accessions Identified Via Chlorophyll Fluorescence	
V. DISCUSSION.....	26
VI. CONCLUSION	29
BIBLIOGRAPHY	30
APPENDIX.....	34

LIST OF TABLES

1. Chlorophyll fluorescence data summary for primary round of screening of 1762 accessions and DPL 90 control.....	16
2. Chlorophyll fluorescence data summary for second round of screening of the elite (44) plants and the DPL 90 control.....	18
3. Whole plant screening of 22 elite plants and DPL 90	22
4. Whole plant screening of 7 selected accessions and DPL 90	23
5. Complete primary chlorophyll fluorescence screening data of 1762 accessions and DPL 90 control	35

LIST OF FIGURES

1. Distribution of Accessions and DPL 90 in Primary Screening.....	17
2. Distribution of Accessions in Secondary Screening.....	19
3. Fluorescence data for the average of the 7 selected accessions and DPL 90.....	24
4. Summary of the 44 elite accessions from the second round of screening	25
5. Distribution of the 44 accessions at least one standard deviation above average	28

I. INTRODUCTION

The cotton (*Gossypium* sp.) industry plays a significant role in our economy, especially in the southeastern United States. It is crucial that cotton farmers are able to maximize their annual production yield for a greater financial gain. Some factors can cause a decline in the annual yield such as parasites and heat stress.

The scope of my research is to analyze wild accessions of upland cotton (*G. hirsutum* L.) and identify genotypes that show an increased thermotolerance when compared to 'Deltapine DP 90' (DPL 90), a widely grown adapted cultivar. The wild accessions vary widely in such characteristics as geographic origin, leaf shape, pollen color, photoperiod response, lint quality and other traits. Any plants that are more thermotolerant than DPL 90 will be analyzed at the molecular level in future research. The molecular research could identify any proteins that are expressed under heat stress conditions in the wild accessions, not found in DPL 90. The genes coding for these proteins could then be identified and used to genetically engineer a more thermotolerant cotton plant that would improve the yield of cotton farmers in the southeast.

Any plant has an estimated optimal temperature range of 10° C (Mahan et al., 1995). Cotton plants thrive at a temperature of approximately 27° C. Once the temperatures rise beyond this, plants lose vigor as a result of the heat stress (Smith & Cothren, ed., 234). The productivity of cotton crops significantly decreases as the

temperature continues to increase. Plants can compensate for the high temperatures through evaporative cooling. However, if severe heat stress conditions remain for more than a few hours, plants can not sufficiently cool themselves through evaporation alone. This is especially true in Alabama due to the high summer temperatures and humidity. Once the temperature rises past 27° C, various biochemical processes are altered in plant cells. Some of these processes are photosynthesis, transcription, and translation.

DPL 90 has been one of the most planted cotton varieties in previous years. Cotton farmers have relied on it and other cotton cultivars because of its proven yield ability under stress. However, there is room for improvement in stress-related cotton yield. When searching for scientific articles on differential gene expression in *G. hirsutum*, very little information can be found. Cotton farmers and breeders have not yet identified all of the genetic components of cotton plants required for thermotolerance.

II. REVIEW OF LITERATURE

Responses to Heat Stress in Plants: Heat affects many different functions at the cellular level in plants. Membranes become more fluid at high temperatures because lipid properties change. Enzymatic activity is altered and proteins can denature, causing imbalances in metabolic pathways. Oxidative damage occurs when active oxygen species (AOS) are formed. AOS formation stems from denatured proteins and damaged membranes. Heat shock proteins (HSPs) are also produced in response to heat stress (Larkindale et al., 2005). HSPs will be discussed more thoroughly in following sections. These cellular level disruptions from heat stress decrease the efficiency of photosynthesis. Continual high temperatures can affect flowering. It can also cause reproductive failure and accelerated aging, eventually leading to plant death (Hall, 2001).

The annual crop yield of a plant can be drastically reduced by heat stress. The extent that daily maximum temperature rose above 32° C during seed fill and pollination was determined to be the best variable to predict yield in maize (Thompson, 1975; Dale 1983). Soybean has produced the largest yields during periods of the reproductive season with the coolest temperatures (Martineau et al., 1979). 20-30° C has been established as the optimum temperature range in which to obtain the largest yields in cereal crops (Keeling et al.,1993). A decrease in yield can even occur as a result of high night temperatures (Hall 1990).

Many areas involved in photosynthesis undergo changes when heat stress is encountered. Due to the complexity of the process and the multitude of affected components, the rate-limiting factor of photosynthesis during heat stress has not been determined. The components that are involved in transferring CO₂ from the intercellular space to the chloroplast have been proposed as the major problematic area (Bernacchi et al., 2002). Other weak areas of interest have been the electron transport chain, the inability to regenerate ribulose biphosphate (RuBP) (Wise et al., 2004), and the cellular inability to maintain RuBP carboxylase/oxygenase (RuBISCO) in an active state (Salvucci & Crafts-Brandner, 2004).

Membrane damage can also occur during periods of heat stress. Isoprene has been shown to protect photosynthesis during brief periods of heat stress in plants that produce it such as kudzu (*Pueraria lobata*) and red oak (*Quercus rubra*). This hydrocarbon has also been shown to provide protection when introduced into common bean (*Phaseolus vulgaris*), a species that does not synthesize isoprene. The protective mechanism of isoprene is unknown, but is thought to involve the double bond present in the molecule (Sharkey et al., 2001).

A positive correlation has been found between increased lipid saturation levels and increased thermotolerance of photosynthesis (Murakami et al., 2000). This correlation has also been observed in bentgrass (*Agrostis stolonifera*) (Larkindale & Huang, 2004b). Some heat-induced transcripts have been induced by increasing membrane fluidity in the absence of heat (Sangwan et al., 2002). This demonstrates that membrane changes as a result of heat stress are involved in thermotolerance.

Pre-treatment with H₂O₂ or menadione can lead to an increase in thermotolerance (Larkindale 2001; Larkindale & Huang, 2004a). H₂O₂ production is an early response to heat stress (Dat et al., 1998b; Vacca et al., 2004; Larkindale, 2001). These findings suggest that some active oxygen species (AOS) play a role in heat stress-signaling, possibly inducing heat shock proteins (HSPs). In addition to H₂O₂, several other chemicals seem to be involved in heat stress responses. Ethylene production has been induced by heat treatments (Dziubinska et al., 2003), and ACC oxidases are upregulated, by heat stress (Nie et al., 2002). Plants pre-treated with abscisic acid (ABA) showed an increased thermotolerance (Robertson et al., 1994; Gong et al., 1998; Larkindale & Knight, 2002; Larkindale & Huang, 2004a), as did those pre-treated with salicylic acid (SA) (Dat et al., 1998; Larkindale & Knight, 2002; Clarke et al., 2004; Larkindale & Huang, 2004a). Heat and changes in membrane fluidity have been shown to upregulate a MAP kinase in *Arabidopsis* (Sangwan et al., 2002). A kinase that phosphorylates a heat shock transcription factor (HSF) in tomato was found to be upregulated as well (Link et al., 2002).

Responses to Heat Stress in Cotton: Heat stress has been shown to retard leaf growth rate and stem elongation, which leads to plants of shorter stature with lower yields and fewer nodes (Reddy et al., 1992; Reddy, Baker & Hodges, 1993; Reddy et al., 1995). A notable response in cotton is the effects of high temperatures on reproductive growth. Plants growing at high temperatures during the period of flower development exhibit drastically lower bud/flower/boll retention. At temperatures of 40° C, all flowers and fruits are aborted (Reddy, Hodges, & Reddy, 1992; Taha et al., 1980; Reddy et al.,

1993). Heat stress also adversely affects fiber length and other fiber quality characteristics (Bradow & Bauer, 1997; El-Zik et al., 2000; Liakatas et al., 1998).

Crafts-Brandner and Salvucci (2000) have shown that the activation status of RuBISCO by RuBISCO activase limits photosynthesis in heat stressed cotton plants. A novel form of this enzyme is induced by heat stress (Law et al., 2001; Salvucci & Crafts-Brandner, 2004). Membrane stability (Hafeez ur Rahman et al., 2004) and antioxidant levels (Mahan & Mauget, 2005) show change in response to heat stress and have been used to evaluate thermotolerance in cotton plants.

Differential Gene Expression and Heat Shock Proteins (HSPs): The first evidence of differential gene expression came as result of the work of F. Ritossa in 1962. After a temperature increase in his incubator, Ritossa noticed a change in the puffing patterns of polytene chromosomes found in *Drosophila melanogaster* salivary glands. The magnitude of this discovery was not fully realized until over 10 years later. In 1974, A. Tissieres identified these puffs as genes expressed under heat stress conditions. Since these genes were transcribed under heat stress, the final products of protein synthesis were termed “Heat shock proteins” (Hsps). This general heat stress response has been highly conserved and can be found in both prokaryotes and eukaryotes. Hsps primarily function as chaperones involved in the maintenance of protein homeostasis. Heat stress transcription factors (Hsfs) control the transcription of genes that code for Hsps. These transcription factors are found in the cytoplasm and exist in an inactive state until needed by the cell. Hsps are synthesized during heat stress to increase the amount of chaperones available for refolding denatured proteins (Baniwal et al., 2004).

More than 20 heat shock transcription factors have been found in plants. This is significant since only three have been found in vertebrates. Only one each has been found in yeast and *Drosophila*. While the size and sequence of these Hsfs vary, the basic structure and promoter region are conserved. Three α -helices and a four-stranded antiparallel β -pleated sheet form the DNA-binding domain (DBD). This domain is located near the N-terminal end of *Arabidopsis* Hsfs. Hydrophobic amino acids are found in the DBD core, which functions in recognizing heat stress promoter elements (HSE). These promoter elements are located upstream of the TATA box in genes transcribed during heat stress (Baniwal et al., 2004).

An HR-A/B region comprises a second domain in *Arabidopsis* Hsfs. This domain is separated from the DNA-binding domain by a flexible linker. This linker region varies from 15 to 80 amino acids in length. Differences in the linker and H-A/B regions have led to the identification of three classes of Hsfs in plants (A, B and C). Another component of all plant Hsfs is a nuclear localization signal (NLS) formed from basic amino acid clusters. A nuclear export signal (NES) is located at the C-terminus. The NES is composed of hydrophobic amino acids residues and often has an abundance of leucine. The C-terminus also contains short peptide motifs made up of acidic, aromatic, and large hydrophobic amino acids. These motifs are thought to be responsible for the activation of transcription in *Hsps* (Baniwal et al., 2004).

Chloroplasts each have one heat shock protein with a low molecular weight (lmw). The chloroplast lmw Hsp has a unique, methionine-rich domain. Heckathorn et al. (1998) used this information to study the chloroplast Hsp in tomato plants (*Lycopersicon esculentum*). Chloroplasts were isolated from heat-stressed tomato plants and lysed. An

antibody specific to the Met-rich region (Ab_{met}) of the chloroplast Hsp and one specific to a domain conserved in all lmw Hsps (Ab_{α}) were employed. These antibodies were added to restrict the function of the chloroplast lmw Hsp. All chloroplast samples were treated with the antibodies after incubation at control or pre-heat stress temperatures and O_2 exchange rates were measured in the samples to determine the effectiveness of photosynthetic electron transport.

The whole-chain electron transport rate was considerably lower at 47° C in all cases. The pre-heat-stressed plants had a lower rate than the control samples at 25° C. However, the rate was higher in pre-heat-stressed plants than the control at 47° C. These data indicate that the pre-heat-stressed plants were slightly more tolerant than the control plants. This observation was most likely due to the production of the chloroplast Hsp in pre-heat stressed plants before the antibodies were added. The control samples were not pre-heat stressed so the antibodies did not have any effect. Heckathorn also wanted to know if the chloroplast lmw Hsp would confer protection during heat stress if added to chloroplasts not previously containing it. When the protein was added, the rate of electron transport at 47° C was 22% lower than a control sample at 25° C. When the protein was not added, the rate was at 47° C was 80% lower. These data, in conjunction with the previous experiments, proved that the chloroplast lmw Hsp increases the thermotolerance of photosynthetic electron transport (Heckathorn et al., 1998).

Transgenic tomato lines overexpressing HsfA1a constitutively or a wild type control survived a one hour at 45° C heat shock, while a co-suppressed HsfA1a line (CS) did not survive the same heat stress (Baniwal et al., 2004). The third line analyzed was a wild type line (WT) used as a control. A heat shock treatment of one hour at 45° C was

applied to all three lines. No change in phenotype occurred in the HsfA1a-overexpressing and WT plants, but the CS plants died shortly after the treatment. A severe heat stress of one hour at 45° C prior to one hour at 55° C also killed WT plants, but HsfA1a-overexpressing plants survived. This indicated that HsfA1a is the main regulating component of thermotolerance in tomato plants. Although a single regulator Hsf has not been identified in *Arabidopsis*, the overall principles and conservation of Hsf families are similar in all plants (Heckathorn et al., 1998).

In *Arabidopsis*, the role of Hsp 101 in thermotolerance has been investigated (Queitsch et al., 2000). A 15 minute heat shock at 45° C did not cause a phenotypic change in either control or Hsp 101 over-expressing plants. All plants looked as healthy as unstressed plants even after a five day period. After a 30 minute heat shock, all plants expressing Hsp101 remained as healthy as unstressed plants. However, empty vector transformed control plants that did not have an Hsp101 insert had some leaves that were bleached and withered. Most of the vector control plants died after a 45 minute treatment, while most of the constitutive plants survived. A 60 minute heat shock produced immediate phenotypic changes. Some leaves of the constitutive plants were also bleached. However, most of these plants survived and had returned to normal growth after 10 days, while all vector control plants had died. This data indicated that Hsp101 appeared to play a more pivotal role in the recovery of plants after heat stress than preventing stress related damage. Another important discovery was that changing the expression levels of Hsp101 did not affect normal plant growth, however, plants expressing high levels of Hsp101 showed a significant improvement in recovery after heat stress (Queitsch et al., 2000).

Chlorophyll Fluorescence Screening: Chlorophyll fluorescence data from plant leaves can determine the effectiveness of photosynthesis. When light strikes a chlorophyll molecule, electrons are boosted to an excited, higher energy state. They can not remain at this high-energy state. As a result, they fall back down to a lower energy level. The free energy can be used for photosynthesis, given off as heat, or emitted as red fluorescent light. The re-emitted light has a longer wavelength than the light that was absorbed. A chlorophyll fluorometer can be used to obtain quantitative chlorophyll fluorescence data of plants. The data is obtained by exposing a leaf to a defined wavelength of light and measuring how much light is re-emitted at longer wavelengths (Maxwell & Johnson, 2000).

The defined wavelength of light emitted by the fluorometer has a corresponding ground state fluorescence value (F_o). A burst of intense bright light is used to induce maximum fluorescence (F_m). The initial electron acceptor of photosystem II (PSII) is reduced when this occurs. The fluorometer calculates the chlorophyll fluorescence value using the following formula: $(F_o - F_m) / F_m$. The reported value for healthy leaves of any plant species is between 0.7 and 0.8. This value reflects the overall effectiveness of PSII. High fluorescence values indicate leaves capable of effective photosynthesis. If the value is low, PSII reaction centers have been damaged. Stress treatments, including heat stress, decrease the chlorophyll fluorescence values of leaves (Fracheboud, 2004).

III. METHODS AND MATERIALS

Plant Material: Seeds of the control commercial cotton cultivar Deltapine DP 90 (DPL 90) were obtained from Dr. David Weaver, professor of Agronomy and Soils at Auburn University, Auburn, Alabama. This was chosen as the baseline commercial cotton cultivar used for this study because anecdotal reports from Alabama cotton growers indicated that despite the fact that this is an older cultivar, it is among the most heat and drought tolerant of cultivars available. Seeds of 1762 accessions of *Gossypium hirsutum* germplasm collection were obtained from A. E. Percival at the US National Cotton Germplasm Collection, Crop Germplasm Research Unit, Southern Crops Research Laboratory, Agricultural Research Service (ARS), United States Department of Agriculture (USDA), Soil and Crop Sciences Department, Texas A&M University, College Station, Texas.

Plant Growth: All *Gossypium* accessions studied were planted individually in square, 10 cm, plastic pots containing PRO-MIX® soilless growth medium at the Auburn University Plant Science Research Center (PSRC). Plants were grown in lots of 50 to 100 plants for 4 to 6 weeks under ambient conditions in a greenhouse. During this growth period, plants were sufficiently watered twice daily. They were fertilized once weekly with Peter's® brand 20-10-20 fertilizer in a 250 parts per million (ppm) solution applied through a Dosmatic® with a 1:100 ratio. Two to four full expanded, healthy leaves were removed from each plant and placed in plastic sandwich

bags (Glad Storage®), which were not sealed. The collected leaves were subsequently placed in a growth chamber in the dark for chlorophyll fluorescence analysis.

Chlorophyll Fluorescence Screening of Cotton Germplasm: Fluorescence readings were taken at room temperature within 15 minutes of collecting the leaves from greenhouse grown plants. All leaves were then placed in a 35° C growth chamber in the dark and allowed to equilibrate for one hour. Leaves were then transferred to a 45° C incubator in the dark. The leaves were removed after 30 minutes and fluorescence values were recorded using a chlorophyll fluorometer. Subsequently, the leaves were placed back into the 45° incubator and fluorescence readings were taken after 60 total minutes of incubation. Leaves were then transferred to a 55° C incubator and fluorescence readings were taken after 30 and 60 minutes in the same manner.

All accessions that demonstrated an F_v/F_{max} ratio (ratio of variable to maximum fluorescence) at least 0.1 greater than DPL 90 were retained and reevaluated a second time to verify the results of the initial screening. Note that the value of 0.1 greater than DPL 90 was roughly three times the chlorophyll fluorescence shown by DPL 90 and was arbitrarily chosen as a preliminary value greater than that of DPL 90 and the subsequently determined mean of the tested accession. Subsequently, when the entire dataset was obtained this value appeared to have been a judicious choice since it was at least 1 standard deviation above the mean.

Whole Plant Screening of Elite Accessions Identified Via Chlorophyll

Fluorescence: Plants that exhibited superior chlorophyll fluorescence compared to the DPL 90 control (see above) in both initial stages of fluorescence screening were kept for a second whole plant thermotolerance evaluation. 44 accessions met these

criteria, but seed remained for only 22 of these accessions. The goal of this screening was to evaluate the validity of the chlorophyll fluorescence screening as an initial procedure of identifying thermotolerant cotton plants that performed above average. New groups of plants were grown as previously described above for each elite accession. Plants were then transferred to a Rheem Environmental Chamber (Puffer Hubbard), model number CEC38-15-G, and held at 25° C, with high humidity and light intensity. Plants were allowed to incubate under these conditions for three days. During this incubation time, plants were watered to soil saturation daily. After three days equilibration, heat stress was applied by raising the temperature in the growth chamber to 45° C. Pictures of the plants were taken before the application of heat stress, as well as each of the following days. The health and overall appearance of each plant was recorded daily to monitor the effect of the heat stress.

Plants were well watered the first three days of heat stress. No water was given starting on Day 4 after the initiation of heat stress to also examine the compounding effect of drought stress and the heat tolerance of the accessions. The plants were monitored and photographed daily until most of the plants demonstrated symptoms of severe stress.

Three levels of stress were established for this screening process. Level 1 stress was defined as a plant having at least one leaf that showed symptoms of stress. These symptoms include dark spots, limpness, discoloration including loss of green color, dryness, or a leaf that had fallen off the plant. Plants were said to display Level 2 stress when more than a few leaves showed stress symptoms mentioned previously. However, at least half of the leaves in a Level 2 stress plant were still green and fairly healthy.

Level 3 stress was reached when the majority of leaves showed significant symptoms of stress as previously described.

IV. RESULTS

Chlorophyll Fluorescence Screening of Cotton Germplasm: The average initial fluorescence, reported as the F_v/F_{max} ratio, of the 1762 accessions at room temperature was 0.763 with a standard deviation of 0.043. The average ratio after one hour at 45° C was 0.680 with a standard deviation of 0.071. After one hour at 55° C, the average had dropped to 0.067 with a standard deviation of 0.057. Plants with a final reading of 0.1 and above (273 accessions) were kept and re-screened at a later date in the same manner. See Table 1 for a summary of the data for the primary screening, along with that of the DPL 90 control and the 273 re-screens. Figure 1 shows the distribution of the 1762 accessions and the DPL 90 control in the primary screening.

After a second screening process on the 273 accessions that were kept, the average F_v/F_{max} ratio at room temperature was 0.766 with a standard deviation of 0.038. After one hour at 45° C, the average ratio was 0.677 with a standard deviation of 0.071. The ratio was 0.071 with a standard deviation of 0.063 after one hour at 55° C. There were 60 final (55° C, 60 minutes) fluorescence values greater than one standard deviation above the average final value for the entire second screening. These 60 fluorescence values represented 44 different accessions, with some accessions having multiple samples tested. The average final fluorescence value of these 60 accessions was 0.218 with a standard deviation of 0.089. The data for these 44 accessions is found in Table 2. The distribution of accessions (273 total) in the secondary screening is found in Figure 2.

Table 1. Chlorophyll fluorescence data for primary round of screening of 1762 accessions and DPL 90 control.

	F_v/F_{max}				
	RT	45°C/30M	45°C/60M	55°C/30M	55°C/60M
Primary Screen (1762 Accessions)					
Mean	0.763	0.696	0.680	0.118	0.067
Std. Deviation	0.043	0.061	0.071	0.086	0.057
DPL 90 (30 reps)					
Mean	0.764	0.665	0.634	0.107	0.055
Std. Deviation	0.011	0.071	0.110	0.105	0.041
Rescreen (Top 273 Accessions, $>0.1 F_v/F_{max}$)					
Mean	0.766	0.694	0.677	0.139	0.071
Std. Deviation	0.038	0.055	0.071	0.102	0.063

Figure 1. Distribution of Accessions and DPL 90 in Primary Screening.
 Tested accessions are read on the left Y-axis.
 DPL 90 controls are read on the right Y-axis.

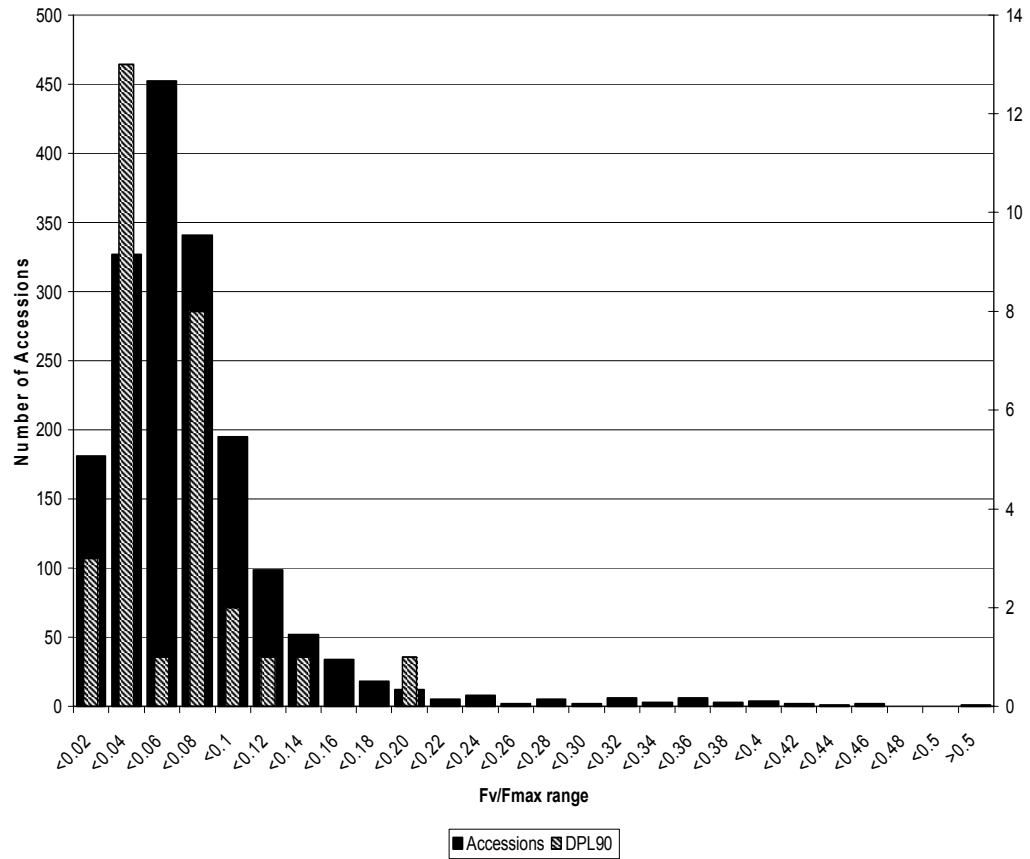
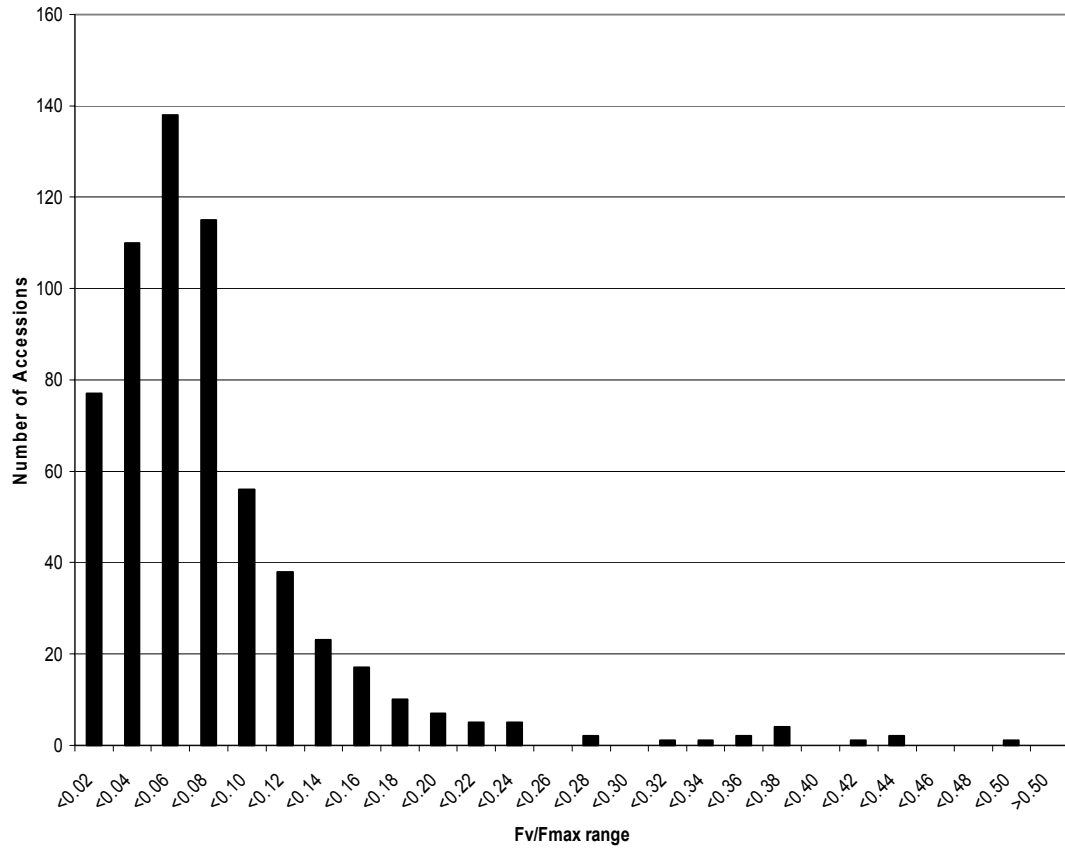


Table 2. Chlorophyll fluorescence data summary for second round of screening of the elite (44) accessions and the DPL 90 control.

	Fv/Fmax				
	RT	45°C/30M	45°C/60M	55°C/30M	55°C/60M
2nd Screen (44 Accessions >1 St.Dev. above mean in both screens)					
Mean	0.763	0.681	0.655	0.28	0.218
Std. Deviation	0.062	0.083	0.101	0.136	0.089
DPL 90 (30 reps)					
Mean	0.764	0.665	0.634	0.107	0.055
Std. Deviation	0.011	0.071	0.11	0.105	0.041

Figure 2. Distribution of Accessions in Secondary Screening.



Whole Plant Screening of Elite Accessions Identified Via Chlorophyll

Fluorescence: All 22 accessions in the whole plant screening process performed as well or better than DPL 90 when subjected to heat and drought stress. Fourteen DPL 90 plants were used as the control in this screening. The 22 TX accessions had an average of 3.4 days until first signs of stress were evident (Level 1). The average for DPL 90 was two days until Level 1 stress had been reached. Level 2 stress was evident at 4.7 days in the TX accessions and 4.0 days in DPL 90 plants. 5 days marked Level 3 stress in DPL 90 plants, while 5.4 days marked this level in TX accessions. A summary of the whole plant screening of the elite 22 plants and DPL 90 is found in Table 3. This table also gives the fluorescence values in the primary and secondary screening for each of the 22 accessions. However, these accessions represent the half of the 44 accessions identified by chlorophyll fluorescence screening for which seed remained. The other 22 TX accessions that exhibited superior fluorescence ratios are as follows: TX 2, 256, 338, 462, 761, 786, 804, 816, 852, 1197, 1234, 1299, 1351, 1366, 1401, 1528, 1704, 1950, 2030, 2044, 2047, and 2326. Seven of the 22 accessions subjected to whole plant screening significantly outperformed DPL 90 in the whole plant screening.

All seven of these accessions had greener, healthier leaves throughout the application of heat and drought stress. They also outlived the DPL 90 control plants under these conditions and survived until Day 7, when the stress treatment was stopped. Table 4 gives a summary of the whole plant screening and averages of the seven best accessions and DPL 90. The three levels of stress were considerably delayed in the seven TX accessions occurring at 3.7, 5.0 and 6.1 days, respectively. These stages were reached at 2, 4 and 5 days in the DPL 90 plants.

Figure 3 displays the average fluorescence values of the seven elite accessions, along with the DPL 90 control. The average fluorescence value after 60 minutes at 55° C for the DPL 90 control is approximately 0.05. This average value for the seven selected lines is approximately 0.25, five times greater than that of the control. Figure 4 adds the breakdown of the entire 44 accessions (60 fluorescence values) that excelled in the chlorophyll fluorescence screening. There were 31 accessions that had a final fluorescence value between one and two standard deviations above average. Nineteen accessions had a final fluorescence reading at least 2 standard deviations above average. Six of the 44 accessions appeared in both categories since there were multiple samples of some accessions.

Table 3. Whole plant screening of 22 elite plants and DPL 90.

* Indicates accessions that significantly outperformed DPL 90 in whole plant screening.

Line/Accession	$F_{\sqrt{F_{\max}}} 1^{\circ}$	$F_{\sqrt{F_{\max}}} 2^{\circ}$	Days to Level 1 Stress	Days to Level 2 Stress	Days to Level 3 Stress	Survived Heat Stress?
TX 9	0.173	0.130	4	5	5	No
TX 188	0.138	0.200	4	5	5	No
TX 190	0.167	0.183	4	5	5	No
TX 259	0.145	0.209	3	4	5	No
TX 325	0.129	0.147	4	5	5	No
TX 337 *	0.131	0.135	5	5	5	Yes
TX 783	0.203	0.141	3	6	6	No
TX 884 *	0.420	0.361	5	6	7	Yes
TX 960	0.169	0.140	3	4	5	No
TX 1046	0.145	0.405	4	5	5	No
TX 1308	0.169	0.173	2	3	4	No
TX 1347	0.164	0.232	2	3	4	No
TX 1427 *	0.141	0.222	2	4	6	Yes
TX 1429	0.178	0.362	3	5	5	No
TX 1453 *	0.175	0.368	5	5	6	Yes
TX 2028	0.148	0.176	4	5	5	No
TX 2050	0.158	0.147	3	5	6	No
TX 2279	0.172	0.177	3	5	5	No
TX 2285	0.132	0.149	3	4	5	No
TX 2287 *	0.147	0.175	3	5	6	Yes
TX 2288 *	0.211	0.203	3	4	6	Yes
TX 2454 *	0.141	0.149	3	6	7	Yes
		Average Days of TX Accessions	3.4	4.7	5.4	
DPL 90 (14x)	0.055	0.055	2	4	5	No

Table 4. Whole plant screening of 7 selected accessions and DPL 90.

Line/Accession	Fv/Fmax 1°	Fv/Fmax 2°	Days to Level 1 Stress	Days to Level 2 Stress	Days to Level 3 Stress	Survived Heat Stress?
TX 337	0.131	0.135	5	5	5	Yes
TX 884	0.420	0.361	5	6	7	Yes
TX 1427	0.141	0.222	2	4	6	Yes
TX 1453	0.175	0.368	5	5	6	Yes
TX 2287	0.147	0.175	3	5	6	Yes
TX 2288	0.211	0.203	3	4	6	Yes
TX 2454	0.141	0.149	3	6	7	Yes
Averages of TX Accessions	0.195	0.230	3.7	5	6.1	
DPL 90 (14)	0.055	0.055	2	4	5	No

Figure 3. Fluorescence data for the average of the 7 selected accessions and DPL 90.

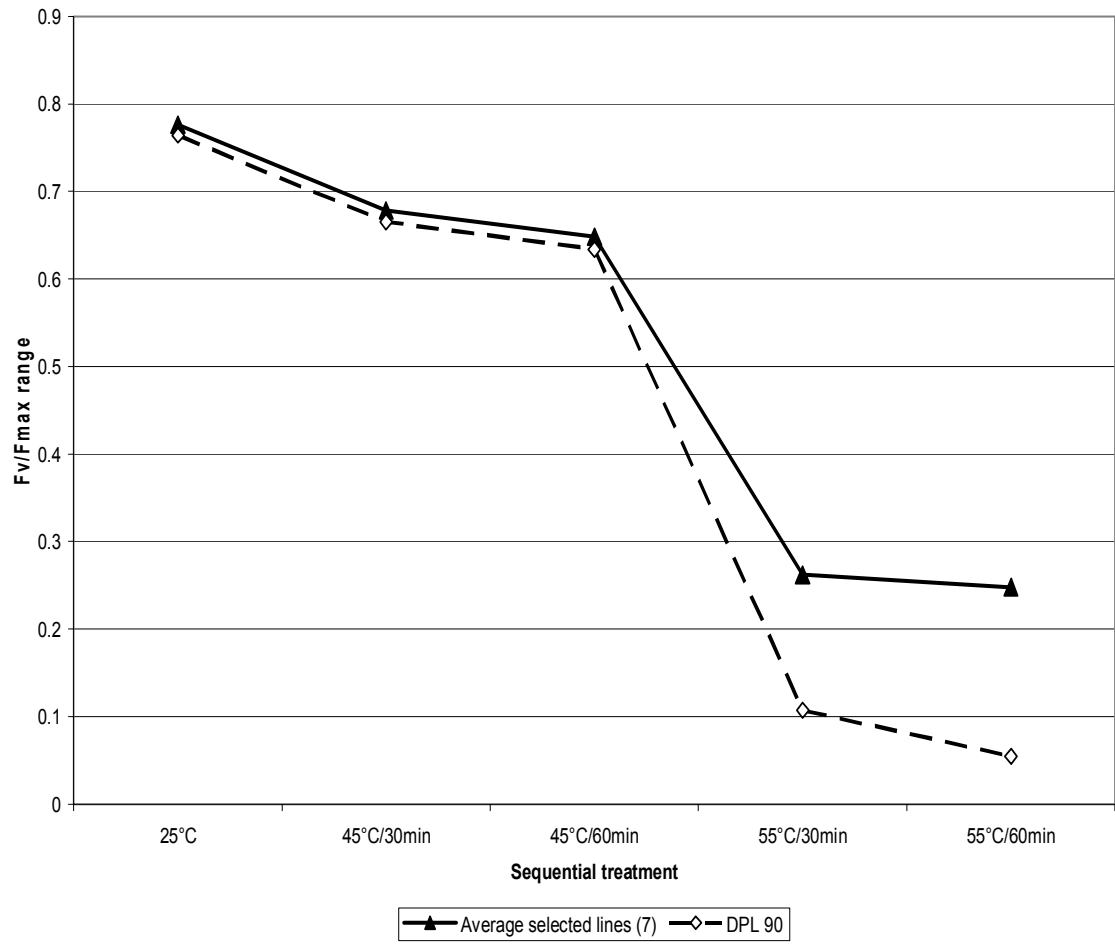
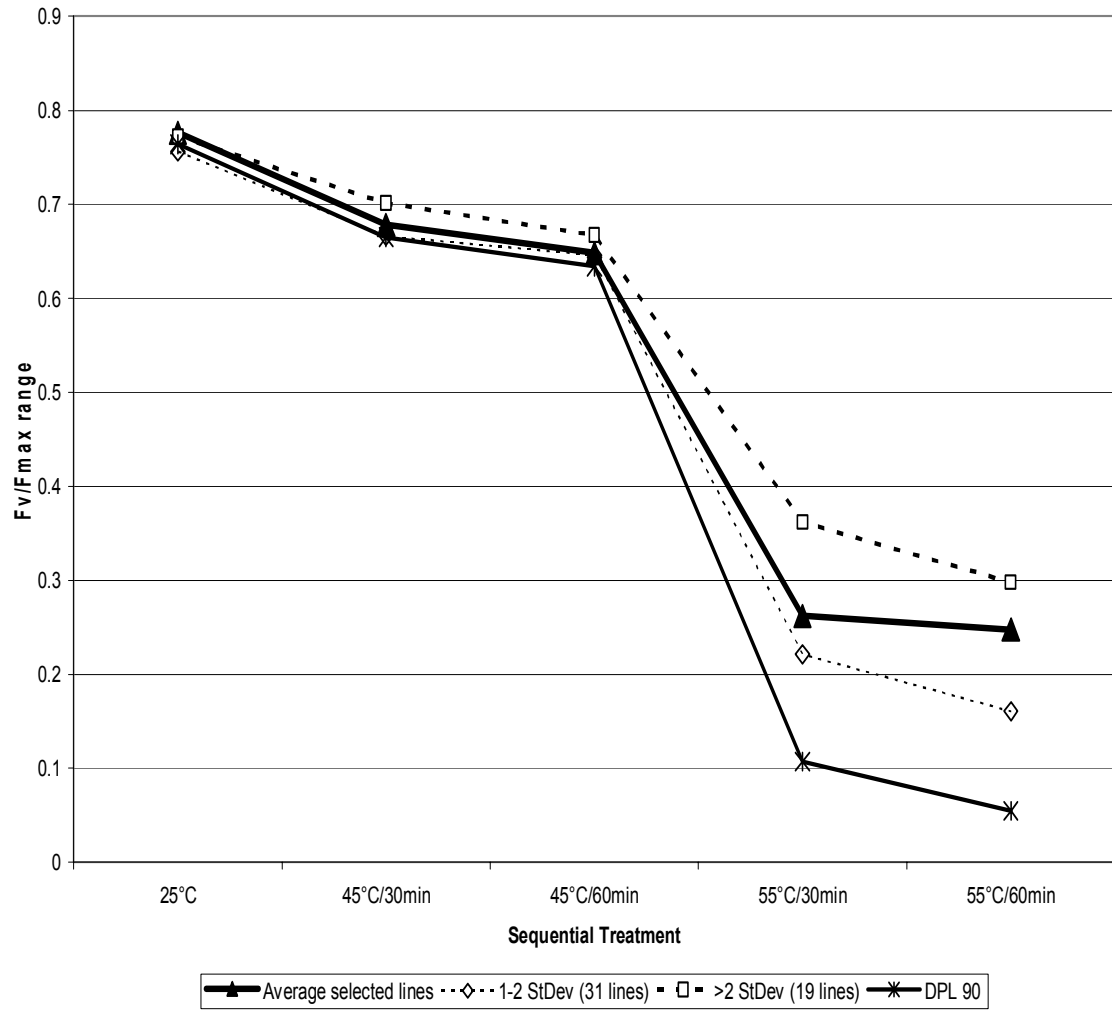


Figure 4. Summary of the 44 elite accessions from the second round of screening.



V. DISCUSSION

Upon examination of the 1762 TX accessions and the DPL 90 control (Figure 1), the two series of data have similar shapes up to a F_v/F_{max} value of 0.20. The series of accessions has a much longer tail beyond this value, indicating some accessions had much higher fluorescence ratios than those observed in DPL 90.

The distribution of 273 accessions in the second screening resembles the distribution of the 1762 accessions in the primary screening. This distribution is shown in Figure 4. Figure 7 shows the distribution of the 44 accessions with a fluorescence value at least one standard deviation above average. It is evident that the curve is shifted to the right, indicating significantly higher fluorescence values than seen in the graphs of the entire primary and secondary screening distributions.

All 44 accessions that had a final fluorescence value at least one standard deviation above the average through both rounds of screening were considered to be elite plants on the basis of chlorophyll fluorescence. However, we only had seed remaining for 22 of these accessions. These 22 different accessions were selected for the whole plant screening process discussed previously. Three of these plants had a final value at least two standard deviations above the average in both rounds of screening.

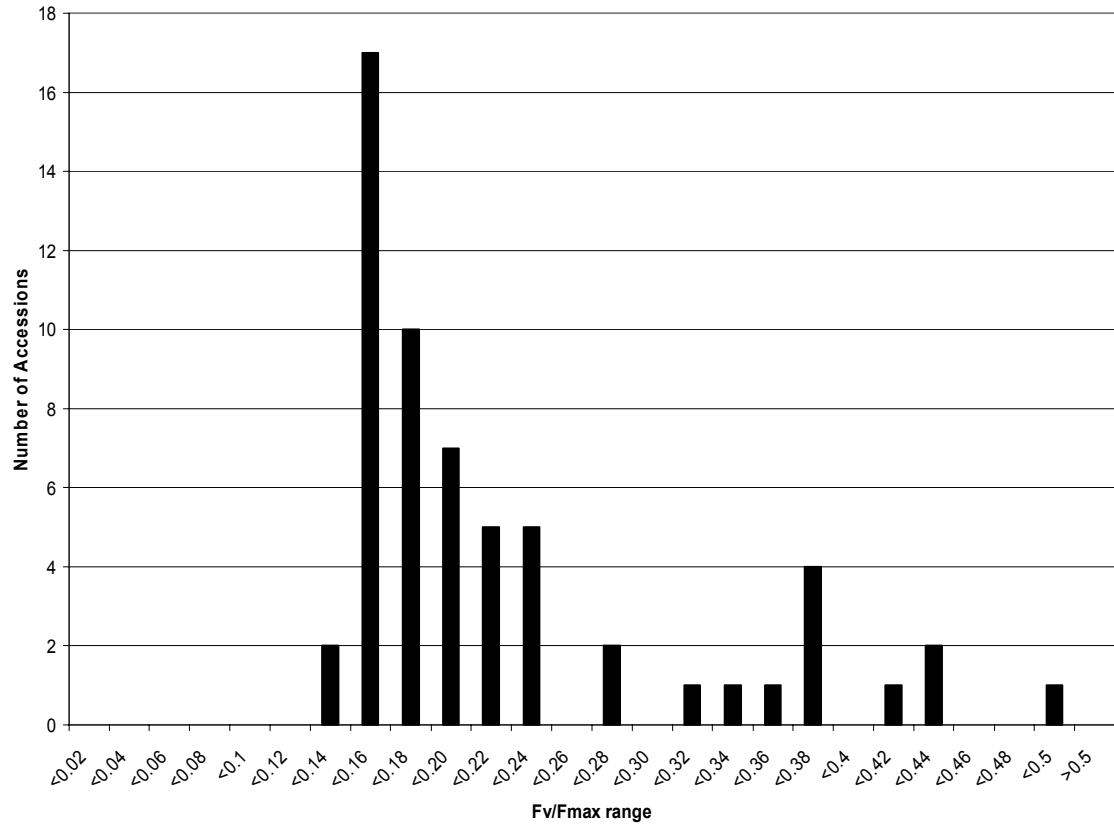
Only two of the DPL 90 control plants had a final value significantly above average. The highest DPL 90 final value for a second round of screening was 0.195. This

value was substantially lower than some of the final values for wild accessions which were greater than 0.4.

The F_v/F_{max} ratio reflects the efficiency of photosystem II during photosynthesis. The seven accessions which outperformed DPL 90 in all three rounds of screening had much higher F_v/F_{max} values. The average final value (55° C, 60 minutes) of these seven from the primary screening was 0.195. The average of the secondary screening was 0.230. DPL 90 had an average final fluorescence value of 0.055 in both rounds of chlorophyll fluorescence screening. This data is listed in Table 4. Also, Figure 5 shows the higher average values of the seven accessions throughout the sequential stress treatment. The higher values in the seven accessions suggest an improved performance of photosystem II, thus allowing photosynthesis to occur more effectively.

The final seven accessions were selected not only for their superior chlorophyll fluorescence, but also for their performance and survival during the whole plant screening process. All seven looked healthier than DPL 90 throughout the stress treatment. The DPL 90 plants and other TX accessions had died by the end of the treatment on Day 7. The selected accessions all survived. However, the other 15 accessions that exhibited superior chlorophyll fluorescence did not survive the whole plant screening.

Figure 5. Distribution of the 44 accessions at least one standard deviation above average.



VI. CONCLUSION

The seven accessions that exhibited superior chlorophyll fluorescence and survived the whole plant heat stress screening were clearly more thermotolerant and drought tolerant than DPL 90. However, not all plants that showed elite chlorophyll fluorescence performed well in the whole plant screening. It is apparent therefore that factors other than genotype can influence the heat-stress induced elite chlorophyll fluorescence phenotype, generating false positive results during chlorophyll fluorescence screening. This was also apparent in the first and second round of chlorophyll fluorescence screening. However, since seven of the 22 accessions selected by chlorophyll fluorescence screening outperformed the DPL 90 control, this method proved to be effective in identifying plants with improved thermotolerance. If future, research can identify the causes for the false positive fluorescence results, a correlation between heat-induced chlorophyll fluorescence and thermotolerance in *Gossypium hirsutum* may still emerge. The method developed in this research has already been successful in narrowing down a large quantity of plants to a select an elite few for further study.

As a result of a possible correlation between chlorophyll fluorescence and thermotolerance, chlorophyll fluorescence screening could become a valuable approach to assessing thermotolerance in all plants. With the ever present issue of global warming, a method applicable to identifying and selecting thermotolerance in all species of plants could be of major ecological importance.

BIBLIOGRAPHY

- Baniwal SK, Bharti K, Chan KY, Fauth M, Ganguli A, Kotak S, Mishra SK, Nover L, Port M, Scharf KD, Tripp J, Weber C, Zielinski D and von Koskull-Döring P. 2004. Heat stress response in plants: a complex game with chaperones and more than twenty heat stress transcription factors. *Journal of Biosciences*. 29(4): 471-487.
- Bernacchi CJ, Portis AR, Nakano H, von Caemmerer S and Long SP. 2002. Temperature response of mesophyll conductance. Implications for the determination of Rubisco enzyme kinetics and for limitation to photosynthesis *in vivo*. *Plant Physiology*. 130(4): 1992-1998.
- Bradow JM, Bauer PJ. 1997. Fiber-quality variations related to cotton planting date and temperature. *Proceedings Beltwide Cotton Conference*. pp. 1491-1495.
- Clarke SM, Mur LA, Wood JE and Scott IM, 2004. Salicylic acid dependent signaling promotes basal thermotolerance but is not essential for acquired thermotolerance in *Arabidopsis thaliana*. *Plant Journal*. 38(3): 432-447.
- Crafts-Brandner SJ, Salvucci ME. 2000. Rubisco activase constrains the photosynthetic potential of leaves at high temperature and CO₂. *Proceedings of the National Academy of Sciences*. USA. 97: 13430-13435.
- El-Zik KM, Thaxton PM, Dusek TF, Brooks TD, Schaefer K. 2000. Effect of planting date, moisture, and heat units on cotton yield and fiber quality under dryland production. *Proceedings Beltwide Cotton Conference 2000*. pp. 525-528.
- Fracheboud Y. 2004. Using Chlorophyll Fluorescence to Study Photosynthesis. Available online at <http://www.ab.ipw.agrl.ethz.ch/~yfracheb/flex.htm>.
- Dale, RJ. 1983. Temperature perturbations in the Midwest and southeastern United States important for corn production. In C. D. Raper and P.J. Kramer (eds.) *Crop Reactions to Temperature and Water Stresses in Humid, Temperate Climates*. Westview Press. Boulder, CO. pp. 21-32.
- Dat JF, Lopez-Delgado H, Foyer CH and Scott IM. 1998. Parallel changes in H₂O₂ and catalase during thermotolerance induced by salicylic acid or heat acclimation in mustard seedlings. *Plant Physiology*. 116(4): 1351-1357.

- Dziubinska H, Filek M, Koscielniak J and Trebacz K. 2003. Variation and action potentials evoked by thermal stimuli accompany enhancement of ethylene emission in distant non-stimulated leaves of *Vicia faba* minor seedlings. *Journal of Plant Physiology*. 160(10): 1203-1210.
- Gong M, Li YJ and Chen SZ. 1998. Abscisic acid-induced thermotolerance in maize is mediated by calcium and associated with antioxidant systems. *Journal of Plant Physiology*. 153(3-4): 488-496.
- Hall, AE. 2001. *Crop Responses to the Environment*. CRC Press. Boca Raton, FL.
- Hall, AE. 1990. Breeding for heat tolerance-An approach based on whole plant physiology. *HortScience*. 25(1): 17-19.
- Hafeez ur Rahman H, Malik SA, Saleem M. 2004. Heat tolerance of upland cotton during the fruiting stage evaluated using cellular membrane thermostability. *Field Crops Research* 85(2-3): 149-158.
- Heckathorn SA, Downs CA, Sharkey TD and Coleman JS. 1998. The small, methionine-rich chloroplast heat-shock protein protects photosystem II electron transport during heat stress. *Plant Physiology*. 116(1): 439-444.
- Keeling PL, Bacon OJ and Holt DC. 1993. Elevated temperature reduces starch deposition in wheat endosperm by reducing the activity of soluble starch synthase. *Planta*. 191(3): 342-348.
- Kornyeyev D, Holaday S, Logan B. 2003. Predicting the extent of photosystem II photoinactivation using chlorophyll a fluorescence parameters measured during illumination. *Plant and Cell Physiology*. 44(10): 1064-1070.
- Larkindale J. 2001. Cell signaling in response to heat shock in *Arabidopsis thaliana*. Doctorate of Philosophy dissertation. New College. Oxford University, UK.
- Larkindale J and Huang B. 2004a. Thermotolerance and antioxidant systems in *Agrostis stolonifera*: involvement of salicylic acid abscisic acid, calcium, hydrogen peroxide, and ethylene. *Journal of Plant Physiology*. 161(4): 405-413.
- Larkindale J and Huang B. 2004b. Changes of lipid composition and saturation level in leaves and roots for heat-stressed and heat-acclimated creeping bentgrass (*Agrostis stolonifera*). *Environmental and Experimental Botany*. 51(1): 57-67.
- Larkindale J and Knight MR. 2002. Protection against heat stress-induced oxidative damage in *Arabidopsis* involves calcium, abscisic acid, ethylene and salicylic acid. *Plant Physiology*. 128(2): 682-695.

- Larkindale J, Mishkind M, Vierling E. 2005. Plant responses to high temperature. In MA Jenks, PM Hasegawa, eds, Plant Abiotic Stress. Blackwell Scientific Publications. Oxford, UK. pp. 100-144.
- Law RD, Crafts-Brandner SJ, Salvucci ME. 2001. Heat stress induces the synthesis of a new form of ribulose-1,5-bisphosphate carboxylase/oxygenase activase in cotton leaves. *Planta*. 214(1): 117-125.
- Liakatas A, Roussopoulos D, Whittington WJ. 1998. Controlled-temperature effects on cotton yield and fibre properties. *Journal of Agricultural Science*. 130(4): 463-471.
- Link V, Sinha AK, Vashista P, Hofmann MG, Proels RK, Ehness R and Roitsch T. 2002. A heat-activated MAP kinase in tomato: a possible regulator of the heat stress response. *FEBS Letters*. 531(2): 179-183.
- Mahan JR, Mauget SA. 2005. Antioxidant metabolism in cotton seedlings exposed to temperature stress in the field. *Crop Science*. 45(6): 2337-2345.
- Martineau JR, Specht JE, Williams AH and Sullivan CY. 1979. Temperature tolerance in soybeans. I. Evaluation of a technique for assessing cellular membrane thermostability. *Crop Science*. 19: 75-81.
- Maxwell K and Johnson GN. 2000. Chlorophyll fluorescence-a practical guide. *Journal of Experimental Botany*. 51(345): 659-668.
- Murakami Y, Tsuyama M, Kobayashi Y, Kodama H and Iba K. 2000. Trienoic fatty acids and plant tolerance of high temperature. *Science*. 287(5452): 476-479.
- Nie X, Singh RP and Tai GC. 2002. Molecular characterization and expression analysis of 1-aminocyclopropane-1-carboxylate oxidase homologs from potato under abiotic and biotic stresses. *Genome*. 45(5): 905-913.
- Robertson AJ, Ishikawa M, Gusta LV and MacKenzie SL. 1994. Abscisic acid-induced heat tolerance in *Bromus inermis* Leyss cell-suspension cultures. Heat-stable, abscisic acid-responsive polypeptides in combination with sucrose confer enhanced thermostability. *Plant Physiology*. 105(1): 181-190.
- Queitsch C, Hong SW, Vierling E and Lindquist S. 2000. Heat shock protein 101 plays a crucial role in thermotolerance in *Arabidopsis*. *The Plant Cell*. 12(4): 479-492.
- Reddy VR, Baker DN, Hodges HF. 1993. Temperature effects on cotton canopy growth, photosynthesis, and respiration. *Agronomy Journal*. 83: 699-704.

- Reddy KR, Hodges, HF McKinion, JM. 1995. Carbon dioxide and temperature effects on pima cotton development. *Agronomy Journal*. 87: 820-826.
- Reddy KR, Hodges HF, McKinion JM, Wall GW. 1992. Temperature effects on Pima cotton growth and development. *Agronomy Journal*. 84: 237-243.
- Reddy, KR Hodges, HF Reddy, VR. 1992. Temperature effects on cotton fruit retention. *Agronomy Journal*. 84: 26-30.
- Reddy, KR Reddy, VR Hodges, HF. 1992. Temperature effects on early season cotton growth and development. *Agronomy Journal*. 84: 229-237.
- Rizhsky L, Liang H and Mittler R. The combined effect of drought stress and heat shock on gene expression in tobacco. *Plant Physiology*. 130(3): 1143-1151.
- Salvucci ME, Crafts-Brandner SJ. 2004. Relationship between the heat tolerance of photosynthesis and the thermal stability of Rubisco activase in plants from contrasting thermal environments. *Plant Physiology*. 134(4): 1460-1470.
- Sangwan V, Orvar BL, Beyerly J, Hirt H and Dhindsa RS. 2002. Opposite changes in membrane fluidity mimic cold and heat stress activation of distinct plant MAP kinase pathways. *Plant Journal*. 31(5): 629-638.
- Sharkey TD, Chen X and Yeh S. 2001. Isoprene increases thermotolerance of fosmidomycin-fed leaves. *Plant Physiology*. 125(4): 2001-2006.
- Smith, C. Wayne and Cothren, J. Tom (eds.) 1999. *Cotton: Origin, History, Technology, and Production*. John Wiley & Sons, Inc. New York.
- Taha, MA Chaudhry, FI Makhdom, MI. 1980. The influence of high temperature on the crop production pattern and fruit retention of three conventional cotton varieties (*Gossypium hirsutum* L.) in Pakistan. *Pakistan Cottons*. 24: 19-36.
- Thompson, LM. 1975. Weather variability, climatic change, and grain production. *Science*. 188(4188): 535-541.
- Vacca RA, de Pinto MC, Valenti D, Passarella, S, Marra E and De Gara L. 2004. Production of reactive oxygen species, alteration of cytosolic ascorbate peroxidase, and impairment of mitochondrial metabolism are early events in heat shock-induced programmed cell death in tobacco bright-yellow 2 cells. *Plant Physiology*. 134(3): 1100-1112.
- Wise RR, Olson AJ, Schrader SM and Sharkey TD. 2004. Electron transport is the functional limitation of photosynthesis in field-grown Pima cotton plants at high temperature. *Plant Cell and Environment*. 27(6): 717-724.

APPENDIX

Table 5. Complete primary chlorophyll fluorescence screening data of 1762 accessions and DPL 90 control.

TX #	RT	45C/30M	45C/60M	55C/30M	55C/60M	DATE
TX141	0.748	0.708	0.706	0.118	0	11/10/2003
TX32	0.759	0.7	0.699	0.002	0	1/28/2004
TX1929	0.783	0.739	0.718	0.007	0	6/3/2004
TX1969	0.776	0.742	0.742	0.078	0	6/8/2004
TX2009	0.784	0.73	0.693	0.111	0	6/9/2004
TX12	0.787	0.732	0.738	0.023	0.001	10/31/2003
TX24	0.776	0.727	0.731	0.008	0.001	10/31/2003
TX44	0.78	0.754	0.732	0.014	0.001	11/6/2003
TX104	0.769	0.743	0.741	0.039	0.001	11/7/2003
TX87	0.785	0.729	0.733	0.036	0.001	11/7/2003
TX664	0.75	0.698	0.704	0.003	0.001	1/20/2004
TX708	0.674	0.68	0.687	0.073	0.001	1/22/2004
TX1249	0.76	0.723	0.71	0.044	0.001	1/28/2004
TX2066	0.784	0.701	0.645	0.359	0.001	6/15/2004
TX2503	0.792	0.741	0.736	0.109	0.001	7/20/2004
TX2509	0.755	0.645	0.645	0.111	0.001	7/22/2004
TX1465	0.78	0.762	0.761	0.003	0.001	7/22/2004
TX1991	0.761	0.689	0.691	0.017	0.001	10/7/2004
TX52	0.785	0.666	0.544	0.021	0.002	10/31/2003
TX107	0.773	0.737	0.725	0.018	0.002	11/7/2003
TX214	0.769	0.717	0.71	0.05	0.002	11/13/2003
TX642	0.77	0.738	0.75	0.004	0.002	1/13/2004
TX1524	0.752	0.717	0.692	0.044	0.002	3/4/2004
TX1951	0.786	0.681	0.731	0.058	0.002	6/7/2004
TX2404	0.771	0.734	0.717	0.038	0.002	7/14/2004
TX1272	0.745	0.703	0.694	0.051	0.002	7/22/2004
TX1058	0.768	0.699	0.681	0.091	0.002	9/2/2004
TX46	0.777	0.736	0.735	0.058	0.003	10/31/2003
TX39	0.761	0.676	0.652	0.027	0.003	11/4/2003
TX55	0.78	0.62	0.539	0.017	0.003	11/4/2003
TX57	0.776	0.747	0.718	0.043	0.003	11/6/2003
TX80	0.77	0.724	0.726	0.097	0.003	11/7/2003
TX183	0.761	0.678	0.718	0.123	0.003	11/14/2003
TX185	0.661	0.695	0.685	0.07	0.003	11/14/2003
TX1871	0.774	0.731	0.727	0.029	0.003	3/18/2004
TX1712	0.741	0.668	0.64	0.051	0.003	5/10/2004
TX1721	0.76	0.743	0.732	0.048	0.003	5/10/2004
TX2413	0.788	0.746	0.718	0.043	0.003	7/15/2004
TX1276	0.767	0.744	0.722	0.051	0.003	7/22/2004
TX784	0.785	0.688	0.578	0.07	0.003	8/3/2004
TX1240	0.778	0.667	0.634	0.031	0.003	9/30/2004
TX43	0.787	0.652	0.58	0.147	0.004	11/4/2003
TX101	0.775	0.722	0.728	0.018	0.004	11/7/2003
TX147	0.701	0.663	0.667	0.021	0.004	11/10/2003
TX166	0.768	0.702	0.702	0.066	0.004	11/11/2003
TX225	0.685	0.683	0.676	0.06	0.004	11/13/2003
TX2069	0.774	0.753	0.722	0.028	0.004	6/18/2004

TX2100	0.779	0.727	0.694	0.166	0.004	6/22/2004
TX1113	0.767	0.664	0.594	0.028	0.004	10/14/2004
TX22	0.767	0.734	0.738	0.075	0.005	10/31/2003
TX106	0.705	0.748	0.741	0.042	0.005	11/7/2003
TX95	0.786	0.719	0.692	0.022	0.005	11/7/2003
TX171	0.677	0.447	0.438	0.046	0.005	11/11/2003
TX680	0.695	0.678	0.684	0.01	0.005	1/20/2004
TX1890	0.778	0.74	0.74	0.06	0.005	5/19/2004
TX840	0.785	0.725	0.705	0.027	0.005	8/18/2004
TX1027	0.79	0.553	0.357	0.011	0.005	8/26/2004
TX1073	0.775	0.698	0.69	0.018	0.005	9/2/2004
TX20	0.77	0.728	0.7	0.04	0.006	11/4/2003
TX686	0.748	0.673	0.66	0.012	0.006	1/20/2004
TX2470	0.796	0.755	0.753	0.175	0.006	7/20/2004
TX1202	0.774	0.639	0.652	0.019	0.006	9/30/2004
TX50	0.772	0.693	0.567	0.118	0.007	10/31/2003
TX85	0.779	0.707	0.682	0.028	0.007	11/7/2003
TX239	0.757	0.682	0.678	0.05	0.007	11/18/2003
TX284	0.73	0.676	0.668	0.093	0.007	1/6/2004
TX672	0.74	0.666	0.687	0.006	0.007	1/20/2004
TX679	0.749	0.741	0.725	0.013	0.007	1/20/2004
TX1792	0.719	0.67	0.673	0.026	0.007	5/14/2004
TX1804	0.728	0.706	0.688	0.028	0.007	5/14/2004
TX2077	0.788	0.688	0.648	0.104	0.007	6/18/2004
TX2082	0.772	0.744	0.74	0.056	0.007	6/22/2004
TX811	0.777	0.729	0.724	0.02	0.007	8/18/2004
TX86	0.781	0.693	0.7	0.022	0.008	11/7/2003
TX145	0.565	0.559	0.63	0.027	0.008	11/11/2003
TX158	0.513	0.552	0.721	0.016	0.008	11/11/2003
TX675	0.746	0.694	0.688	0.015	0.008	1/20/2004
TX1654	0.758	0.693	0.7	0.03	0.008	4/29/2004
TX1696	0.709	0.716	0.717	0.126	0.008	5/10/2004
TX2495	0.782	0.743	0.738	0.021	0.008	7/20/2004
TX1	0.787	0.679	0.576	0.144	0.009	10/31/2003
TX23	0.751	0.679	0.664	0.023	0.009	10/31/2003
TX2306	0.766	0.683	0.669	0.187	0.009	7/7/2004
TX115	0.785	0.726	0.717	0.161	0.009	10/8/2004
TX128	0.775	0.666	0.611	0.098	0.01	11/10/2003
TX153	0.761	0.734	0.74	0.02	0.01	11/11/2003
TX638	0.753	0.724	0.718	0.028	0.01	1/13/2004
TX695	0.762	0.716	0.721	0.013	0.01	1/20/2004
TX2402	0.773	0.716	0.707	0.101	0.01	7/14/2004
TX2447	0.792	0.692	0.609	0.116	0.01	7/20/2004
TX2491	0.683	0.702	0.706	0.014	0.01	7/20/2004
TX2479	0.713	0.736	0.723	0.078	0.01	7/20/2004
TX843	0.782	0.721	0.712	0.043	0.01	8/18/2004
TX81	0.759	0.758	0.755	0.023	0.011	11/7/2003
TX114	0.775	0.723	0.72	0.11	0.011	11/7/2003
TX660	0.71	0.669	0.67	0.006	0.011	1/20/2004
TX2058	0.776	0.727	0.715	0.041	0.011	6/15/2004
TX2173	0.789	0.741	0.731	0.327	0.011	6/29/2004

TX835	0.78	0.703	0.72	0.051	0.011	8/18/2004
TX998	0.773	0.692	0.701	0.051	0.011	8/26/2004
TX1283	0.778	0.719	0.69	0.05	0.011	10/1/2004
TX3	0.794	0.725	0.683	0.072	0.012	10/31/2003
TX150	0.753	0.675	0.69	0.024	0.012	11/10/2003
TX156	0.689	0.717	0.715	0.067	0.012	11/11/2003
TX243	0.78	0.759	0.757	0.095	0.012	11/18/2003
TX260	0.174	0.206	0.228	0.003	0.012	11/21/2003
TX266	0.741	0.684	0.665	0.008	0.012	1/6/2004
TX624	0.761	0.742	0.72	0.016	0.012	1/13/2004
TX2068	0.791	0.771	0.758	0.23	0.012	6/18/2004
TX2081	0.766	0.716	0.72	0.042	0.012	6/22/2004
TX2125	0.771	0.695	0.678	0.204	0.012	6/23/2004
TX2451	0.778	0.723	0.721	0.199	0.012	7/20/2004
TX2500	0.78	0.747	0.726	0.043	0.012	7/20/2004
TX1215	0.777	0.667	0.629	0.076	0.012	9/30/2004
TX1260	0.772	0.742	0.724	0.049	0.012	10/1/2004
TX15	0.732	0.676	0.539	0.021	0.013	10/31/2003
TX93	0.765	0.658	0.604	0.041	0.013	11/7/2003
TX206	0.767	0.71	0.727	0.072	0.013	11/14/2003
TX285	0.773	0.702	0.693	0.006	0.013	1/6/2004
TX1928	0.789	0.734	0.717	0.003	0.013	6/3/2004
TX2460	0.788	0.729	0.727	0.115	0.013	7/20/2004
TX902	0.783	0.73	0.726	0.098	0.013	8/24/2004
TX77	0.752	0.727	0.719	0.048	0.014	11/7/2003
TX79	0.78	0.748	0.751	0.002	0.014	11/7/2003
TX84	0.758	0.738	0.738	0.003	0.014	11/7/2003
TX169	0.777	0.677	0.668	0.029	0.014	11/11/2003
TX306	0.693	0.497	0.426	0.064	0.014	1/7/2004
TX335	0.762	0.713	0.714	0.034	0.014	1/7/2004
TX678	0.709	0.714	0.727	0.02	0.014	1/20/2004
TX1825	0.685	0.673	0.673	0.098	0.014	5/17/2004
TX2316	0.769	0.739	0.737	0.088	0.014	7/7/2004
TX1042	0.795	0.74	0.723	0.069	0.014	9/2/2004
TX155	0.579	0.404	0.628	0.009	0.015	11/11/2003
TX168	0.621	0.696	0.686	0.035	0.015	11/11/2003
TX1522	0.406	0.374	0.278	0.011	0.015	3/25/2004
TX2088	0.773	0.709	0.719	0.076	0.015	6/22/2004
TX2360	0.801	0.735	0.726	0.203	0.015	7/13/2004
TX1939	0.771	0.735	0.721	0.049	0.015	7/28/2004
TX25	0.779	0.729	0.689	0.024	0.016	10/31/2003
TX27	0.756	0.711	0.705	0.013	0.016	11/4/2003
TX124	0.749	0.72	0.723	0.102	0.016	11/10/2003
TX165	0.74	0.742	0.748	0.076	0.016	11/11/2003
TX280	0.709	0.708	0.708	0.054	0.016	1/6/2004
TX340	0.763	0.688	0.677	0.086	0.016	1/8/2004
TX1919	0.769	0.726	0.713	0.077	0.016	6/3/2004
TX1960	0.767	0.665	0.626	0.022	0.016	6/7/2004
TX2084	0.769	0.771	0.717	0.047	0.016	6/22/2004
TX2476	0.793	0.724	0.708	0.028	0.016	7/20/2004
TX759	0.772	0.705	0.638	0.097	0.016	8/3/2004

TX2112	0.781	0.675	0.664	0.045	0.016	9/9/2004
TX1178	0.759	0.718	0.717	0.081	0.016	9/21/2004
TX34	0.782	0.749	0.748	0.091	0.017	10/31/2003
TX41	0.758	0.573	0.482	0.01	0.017	11/4/2003
TX112	0.774	0.701	0.7	0.066	0.017	11/7/2003
TX1498	0.764	0.663	0.669	0.171	0.017	3/4/2004
TX1714	0.762	0.715	0.705	0.052	0.017	5/10/2004
TX1972	0.777	0.746	0.742	0.139	0.017	6/8/2004
TX2005	0.778	0.696	0.67	0.145	0.017	6/9/2004
TX2355	0.783	0.752	0.754	0.052	0.017	7/13/2004
TX1205	0.777	0.714	0.714	0.036	0.017	9/30/2004
TX1273	0.773	0.728	0.697	0.034	0.017	10/1/2004
TX1538	0.767	0.731	0.735	0.238	0.017	10/7/2004
TX214	0.789	0.748	0.743	0.164	0.017	10/8/2004
TX17	0.762	0.732	0.706	0.048	0.018	11/4/2003
TX203	0.525	0.641	0.716	0.055	0.018	11/13/2003
TX663	0.761	0.689	0.699	0.019	0.018	1/20/2004
TX674	0.735	0.691	0.715	0.093	0.018	1/20/2004
TX1831	0.762	0.719	0.709	0.048	0.018	3/18/2004
TX2475	0.761	0.737	0.745	0.016	0.018	7/20/2004
TX885	0.781	0.665	0.67	0.038	0.018	8/24/2004
TX967	0.778	0.696	0.692	0.023	0.018	8/24/2004
TX1316	0.781	0.73	0.71	0.104	0.018	10/21/2004
TX66	0.765	0.739	0.733	0.03	0.019	11/7/2003
TX196	0.781	0.746	0.725	0.124	0.019	11/13/2003
TX217	0.722	0.7	0.729	0.125	0.019	11/14/2003
TX619	0.766	0.705	0.68	0.055	0.019	1/13/2004
TX2493	0.775	0.758	0.737	0.119	0.019	7/20/2004
TX1074	0.78	0.685	0.619	0.126	0.019	9/2/2004
TX1189	0.751	0.72	0.703	0.021	0.019	9/21/2004
TX1243	0.785	0.671	0.663	0.018	0.019	9/30/2004
TX1145	0.767	0.71	0.689	0.251	0.019	10/7/2004
TX26	0.765	0.702	0.643	0.151	0.02	10/31/2003
TX28	0.77	0.715	0.713	0.019	0.02	11/4/2003
YX30	0.764	0.722	0.69	0.022	0.02	11/4/2003
TX119	0.731	0.706	0.7	0.095	0.02	1/28/2004
TX1513	0.739	0.695	0.702	0.046	0.02	3/25/2004
TX2061	0.768	0.67	0.627	0.03	0.02	6/15/2004
TX2276	0.768	0.722	0.675	0.085	0.02	7/1/2004
TX2325	0.792	0.729	0.723	0.103	0.02	7/14/2004
TX1941	0.789	0.732	0.712	0.278	0.02	7/15/2004
TX2437	0.782	0.719	0.692	0.004	0.02	7/15/2004
TX1021	0.742	0.665	0.675	0.075	0.02	8/26/2004
TX1159	0.753	0.727	0.724	0.003	0.02	9/20/2004
TX69	0.77	0.606	0.537	0.038	0.021	11/7/2003
TX131	0.713	0.701	0.689	0.067	0.021	11/11/2003
TX100	0.736	0.688	0.697	0.038	0.021	1/28/2004
TX1626	0.713	0.724	0.715	0.159	0.021	3/12/2004
TX2025	0.764	0.721	0.729	0.122	0.021	6/10/2004
TX2043	0.789	0.733	0.73	0.027	0.021	6/10/2004
TX2162	0.755	0.707	0.673	0.053	0.021	6/29/2004

TX2350	0.784	0.717	0.737	0.201	0.021	7/13/2004
TX2324	0.781	0.707	0.673	0.158	0.021	7/14/2004
TX2501	0.779	0.694	0.691	0.058	0.021	7/20/2004
TX1372	0.76	0.73	0.727	0.155	0.021	7/22/2004
TX738	0.775	0.706	0.678	0.062	0.021	8/3/2004
TX839	0.781	0.712	0.696	0.058	0.021	8/18/2004
TX1985	0.772	0.693	0.682	0.139	0.021	10/7/2004
TX1139	0.796	0.757	0.736	0.093	0.021	10/8/2004
TX8	0.758	0.615	0.569	0.056	0.022	11/4/2003
TX167	0.362	0.607	0.67	0.059	0.022	11/11/2003
TX267	0.768	0.727	0.73	0.046	0.022	1/6/2004
TX1699	0.768	0.721	0.712	0.094	0.022	3/17/2004
TX1533	0.765	0.709	0.689	0.087	0.022	3/25/2004
TX1577	0.764	0.729	0.721	0.072	0.022	3/29/2004
TX1621	0.741	0.7	0.684	0.071	0.022	4/26/2004
TX1662	0.78	0.711	0.698	0.153	0.022	4/29/2004
TX1851	0.608	0.63	0.647	0.079	0.022	5/17/2004
TX1926	0.78	0.737	0.742	0.054	0.022	6/3/2004
TX2096	0.787	0.738	0.697	0.066	0.022	6/22/2004
TX2282	0.77	0.734	0.732	0.057	0.022	7/7/2004
TX2441	0.781	0.713	0.678	0.015	0.022	7/15/2004
TX794	0.783	0.715	0.711	0.093	0.022	8/4/2004
TX820	0.774	0.716	0.704	0.075	0.022	8/18/2004
TX1151	0.792	0.721	0.708	0.055	0.022	9/20/2004
TX2320	0.765	0.729	0.731	0.085	0.022	10/8/2004
TX226	0.754	0.695	0.666	0.059	0.023	11/13/2003
TX233	0.504	0.711	0.575	0.061	0.023	11/14/2003
TX307	0.682	0.596	0.565	0.09	0.023	1/7/2004
TX1531	0.433	0.302	0.254	0.036	0.023	3/25/2004
TX1546	0.729	0.661	0.687	0.088	0.023	3/25/2004
TX1645	0.781	0.748	0.73	0.067	0.023	4/26/2004
TX2253	0.778	0.74	0.722	0.097	0.023	7/1/2004
TX2358	0.782	0.747	0.723	0.175	0.023	7/13/2004
TX2467	0.771	0.739	0.725	0.073	0.023	7/20/2004
TX1613	0.787	0.735	0.728	0.049	0.023	7/27/2004
TX2243	0.795	0.73	0.719	0.064	0.023	9/9/2004
TX1212	0.769	0.726	0.709	0.207	0.023	9/30/2004
TX1261	0.744	0.717	0.704	0.015	0.023	10/1/2004
TX14	0.786	0.726	0.716	0.164	0.024	10/31/2003
TX37	0.748	0.682	0.601	0.087	0.024	10/31/2003
TX199	0.501	0.551	0.572	0.007	0.024	11/14/2003
TX1582	0.77	0.759	0.764	0.071	0.024	3/29/2004
TX1682	0.691	0.647	0.661	0.067	0.024	5/10/2004
TX1982	0.777	0.703	0.683	0.045	0.024	6/8/2004
TX2314	0.763	0.686	0.694	0.042	0.024	7/7/2004
TX2318	0.774	0.604	0.585	0.086	0.024	7/7/2004
TX1701	0.782	0.762	0.76	0.038	0.024	7/27/2004
TX768	0.783	0.755	0.741	0.055	0.024	8/3/2004
TX834	0.78	0.732	0.711	0.081	0.024	8/18/2004
TX1018	0.788	0.649	0.65	0.077	0.024	8/26/2004
TX1200	0.752	0.656	0.646	0.087	0.024	9/23/2004

TX1247	0.768	0.663	0.622	0.101	0.024	9/30/2004
TX609	0.769	0.505	0.51	0.032	0.025	1/9/2004
TX1237	0.748	0.66	0.654	0.05	0.025	1/28/2004
TX1518	0.704	0.681	0.678	0.052	0.025	3/25/2004
TX1568	0.783	0.761	0.751	0.05	0.025	3/29/2004
TX1837	0.628	0.655	0.67	0.066	0.025	5/17/2004
TX1868	0.754	0.614	0.559	0.047	0.025	5/18/2004
TX1970	0.772	0.719	0.722	0.077	0.025	6/8/2004
TX2003	0.773	0.745	0.736	0.031	0.025	6/9/2004
TX2078	0.769	0.638	0.575	0.232	0.025	6/18/2004
TX2083	0.726	0.701	0.695	0.11	0.025	6/22/2004
TX2103	0.787	0.716	0.678	0.217	0.025	6/22/2004
TX2320	0.782	0.696	0.668	0.342	0.025	7/7/2004
TX2390	0.796	0.748	0.744	0.097	0.025	7/14/2004
TX2499	0.788	0.758	0.748	0.181	0.025	7/20/2004
TX1938	0.78	0.746	0.735	0.05	0.025	7/28/2004
TX986	0.786	0.706	0.661	0.146	0.025	8/24/2004
TX1218	0.771	0.7	0.678	0.054	0.025	9/30/2004
TX1404	0.777	0.738	0.735	0.055	0.025	10/26/2004
TX53	0.775	0.745	0.73	0.028	0.026	11/4/2003
TX31	0.77	0.614	0.589	0.033	0.026	11/4/2003
TX111	0.786	0.623	0.514	0.031	0.026	11/7/2003
TX373	0.775	0.672	0.642	0.034	0.026	1/8/2004
TX491	0.754	0.683	0.706	0.075	0.026	1/9/2004
TX503	0.786	0.67	0.623	0.027	0.026	1/9/2004
TX1233	0.764	0.702	0.645	0.08	0.026	1/28/2004
TX1382	0.745	0.699	0.688	0.054	0.026	2/4/2004
TX1487	0.733	0.677	0.672	0.069	0.026	3/1/2004
TX1695	0.759	0.725	0.719	0.18	0.026	3/17/2004
TX1897	0.776	0.738	0.742	0.027	0.026	5/19/2004
TX1924	0.783	0.745	0.739	0.11	0.026	6/3/2004
TX2057	0.779	0.725	0.675	0.15	0.026	6/15/2004
TX2098	0.781	0.75	0.707	0.078	0.026	6/22/2004
TX2182	0.782	0.747	0.715	0.147	0.026	6/29/2004
TX2508	0.769	0.648	0.647	0.039	0.026	7/22/2004
TX793	0.778	0.754	0.75	0.06	0.026	8/4/2004
TX842	0.774	0.743	0.745	0.011	0.026	8/18/2004
TX1141	0.785	0.73	0.725	0.051	0.026	10/8/2004
TX1410	0.768	0.699	0.69	0.035	0.026	10/26/2004
TX202	0.743	0.661	0.656	0.069	0.027	11/13/2003
TX201	0.781	0.763	0.749	0.083	0.027	11/18/2003
TX244	0.792	0.737	0.732	0.094	0.027	11/18/2003
TX301	0.756	0.566	0.481	0.101	0.027	1/6/2004
TX410	0.779	0.683	0.663	0.071	0.027	1/8/2004
TX481	0.778	0.725	0.69	0.061	0.027	1/9/2004
TX625	0.756	0.685	0.674	0.183	0.027	1/13/2004
TX733	0.748	0.697	0.717	0.124	0.027	1/22/2004
TX1259	0.76	0.714	0.725	0.033	0.027	1/29/2004
TX1506	0.771	0.722	0.703	0.073	0.027	3/4/2004
TX1628	0.679	0.726	0.725	0.105	0.027	3/12/2004
TX1676	0.765	0.72	0.69	0.096	0.027	4/29/2004

TX2002	0.765	0.72	0.736	0.05	0.027	6/9/2004
TX2153	0.762	0.687	0.652	0.049	0.027	6/29/2004
TX2246	0.785	0.754	0.746	0.038	0.027	7/1/2004
TX2300	0.78	0.69	0.691	0.143	0.027	7/7/2004
TX2362	0.797	0.753	0.751	0.032	0.027	7/13/2004
TX1976	0.792	0.716	0.707	0.069	0.027	7/15/2004
TX893	0.781	0.67	0.671	0.172	0.027	8/24/2004
TX1006	0.779	0.709	0.698	0.276	0.027	8/26/2004
TX1045	0.771	0.703	0.677	0.101	0.027	9/2/2004
TX1149	0.776	0.668	0.673	0.04	0.027	9/20/2004
TX21	0.793	0.745	0.695	0.052	0.028	11/6/2003
TX212	0.627	0.643	0.693	0.054	0.028	11/13/2003
TX703	0.763	0.722	0.73	0.074	0.028	1/22/2004
TX1759	0.703	0.654	0.65	0.029	0.028	3/17/2004
TX1585	0.754	0.717	0.722	0.061	0.028	4/14/2004
TX1600	0.764	0.71	0.72	0.086	0.028	4/14/2004
TX1616	0.787	0.733	0.721	0.104	0.028	4/26/2004
TX2142	0.774	0.692	0.691	0.091	0.028	6/29/2004
TX2397	0.79	0.697	0.708	0.144	0.028	7/14/2004
TX2410	0.788	0.742	0.737	0.085	0.028	7/15/2004
TX1956	0.775	0.699	0.695	0.267	0.028	7/29/2004
TX956	0.764	0.563	0.437	0.029	0.028	8/24/2004
TX1000	0.771	0.724	0.713	0.048	0.028	8/26/2004
TX1061	0.788	0.728	0.711	0.06	0.028	9/2/2004
TX752	0.777	0.73	0.72	0.026	0.028	9/9/2004
TX1176	0.772	0.731	0.71	0.056	0.028	9/21/2004
TX1203	0.79	0.72	0.706	0.005	0.028	9/30/2004
TX1258	0.787	0.693	0.659	0.066	0.028	10/1/2004
TX1264	0.759	0.72	0.727	0.157	0.028	10/1/2004
TX1684	0.774	0.688	0.663	0.081	0.028	10/7/2004
TX606	0.785	0.61	0.548	0.063	0.029	1/9/2004
TX1698	0.729	0.67	0.684	0.113	0.029	3/17/2004
TX1874	0.726	0.71	0.729	0.072	0.029	3/18/2004
TX1578	0.762	0.714	0.717	0.09	0.029	3/29/2004
TX1632	0.772	0.741	0.732	0.08	0.029	4/26/2004
TX1834	0.664	0.69	0.683	0.069	0.029	5/17/2004
TX1920	0.78	0.747	0.739	0.097	0.029	6/3/2004
TX1958	0.778	0.676	0.672	0.025	0.029	6/7/2004
TX2015	0.767	0.7	0.695	0.1	0.029	6/9/2004
TX2161	0.76	0.59	0.603	0.206	0.029	6/29/2004
TX867	0.783	0.739	0.709	0.036	0.029	8/18/2004
TX1037	0.787	0.666	0.627	0.295	0.029	8/26/2004
TX1244	0.762	0.64	0.609	0.055	0.029	9/30/2004
TX2037	0.771	0.687	0.689	0.037	0.029	10/7/2004
TX612	0.746	0.663	0.621	0.064	0.03	1/13/2004
TX1450	0.771	0.72	0.717	0.074	0.03	2/4/2004
TX1471	0.752	0.703	0.7	0.057	0.03	3/1/2004
TX1634	0.762	0.739	0.721	0.052	0.03	4/26/2004
TX1707	0.7	0.702	0.698	0.118	0.03	5/10/2004
TX1770	0.74	0.701	0.668	0.039	0.03	5/12/2004
TX1966	0.783	0.726	0.719	0.191	0.03	6/7/2004

TX2099	0.769	0.727	0.699	0.135	0.03	6/22/2004
TX2131	0.727	0.655	0.647	0.041	0.03	6/24/2004
TX2364	0.785	0.75	0.717	0.137	0.03	7/13/2004
TX2407	0.787	0.654	0.611	0.376	0.03	7/14/2004
TX2518	0.795	0.617	0.627	0.236	0.03	7/22/2004
TX1820	0.798	0.758	0.744	0.349	0.03	7/28/2004
TX789	0.76	0.68	0.683	0.087	0.03	8/4/2004
TX790	0.771	0.722	0.724	0.113	0.03	8/4/2004
TX937	0.772	0.708	0.695	0.273	0.03	8/24/2004
TX1336	0.778	0.716	0.711	0.194	0.03	9/23/2004
TX1405	0.753	0.683	0.665	0.052	0.03	10/26/2004
TX279	0.733	0.675	0.691	0.04	0.031	1/6/2004
TX656	0.747	0.685	0.683	0.078	0.031	1/20/2004
TX1757	0.747	0.706	0.692	0.015	0.031	3/17/2004
TX1521	0.743	0.696	0.718	0.08	0.031	3/25/2004
TX1598	0.697	0.708	0.699	0.147	0.031	4/14/2004
TX1683	0.714	0.685	0.682	0.081	0.031	5/10/2004
TX2042	0.782	0.739	0.747	0.031	0.031	6/10/2004
TX2242	0.781	0.722	0.713	0.082	0.031	7/1/2004
TX2375	0.783	0.743	0.732	0.054	0.031	7/13/2004
TX750	0.792	0.746	0.742	0.067	0.031	8/3/2004
TX974	0.786	0.714	0.7	0.222	0.031	8/24/2004
TX1329	0.773	0.707	0.701	0.062	0.031	9/23/2004
TX1304	0.769	0.707	0.681	0.052	0.031	10/14/2004
TX1124	0.776	0.664	0.612	0.093	0.031	10/14/2004
TX83	0.767	0.694	0.723	0.06	0.032	11/7/2003
TX164	0.774	0.662	0.582	0.017	0.032	11/10/2003
TX229	0.766	0.702	0.702	0.074	0.032	11/14/2003
TX318	0.77	0.541	0.512	0.158	0.032	1/7/2004
TX633	0.769	0.736	0.74	0.07	0.032	1/13/2004
TX709	0.737	0.701	0.668	0.042	0.032	1/22/2004
TX712	0.679	0.662	0.64	0.054	0.032	1/22/2004
TX1686	0.689	0.674	0.675	0.303	0.032	5/10/2004
TX2121	0.774	0.727	0.707	0.079	0.032	6/23/2004
TX2405	0.776	0.712	0.647	0.09	0.032	7/14/2004
TX1004	0.781	0.707	0.707	0.118	0.032	8/26/2004
TX1162	0.762	0.659	0.642	0.091	0.032	9/20/2004
TX1979	0.741	0.709	0.691	0.379	0.032	10/7/2004
TX1148	0.795	0.726	0.714	0.106	0.032	10/7/2004
TX1374	0.778	0.72	0.722	0.07	0.032	10/26/2004
TX1407	0.772	0.626	0.598	0.128	0.032	10/28/2004
TX11	0.772	0.716	0.726	0.048	0.033	10/31/2003
TX73	0.796	0.727	0.665	0.056	0.033	11/6/2003
TX110	0.764	0.65	0.629	0.09	0.033	11/7/2003
TX173	0.745	0.68	0.702	0.076	0.033	11/11/2003
TX286	0.752	0.619	0.642	0.014	0.033	1/6/2004
TX232	0.759	0.699	0.696	0.089	0.033	1/29/2004
TX1271	0.756	0.725	0.671	0.1	0.033	1/29/2004
TX2079	0.781	0.714	0.503	0.17	0.033	6/18/2004
TX2130	0.767	0.709	0.69	0.071	0.033	6/24/2004
TX2189	0.755	0.696	0.669	0.102	0.033	6/30/2004

TX2347	0.765	0.639	0.678	0.324	0.033	7/8/2004
TX1941	0.78	0.732	0.737	0.012	0.033	7/28/2004
TX1080	0.768	0.686	0.643	0.053	0.033	9/2/2004
TX2263	0.785	0.73	0.714	0.069	0.033	9/9/2004
TX1158	0.724	0.727	0.725	0.036	0.033	9/20/2004
TX1166	0.777	0.71	0.691	0.166	0.033	9/20/2004
TX1174	0.775	0.75	0.742	0.227	0.033	9/21/2004
TX1183	0.776	0.723	0.69	0.07	0.033	9/21/2004
TX1473	0.732	0.693	0.677	0.091	0.034	3/1/2004
TX1640	0.777	0.728	0.72	0.089	0.034	4/26/2004
TX1808	0.72	0.719	0.719	0.06	0.034	5/14/2004
TX2225	0.789	0.747	0.76	0.08	0.034	7/1/2004
TX1455	0.756	0.704	0.681	0.118	0.034	7/22/2004
TX1736	0.763	0.749	0.749	0.063	0.034	7/27/2004
TX2233	0.773	0.725	0.735	0.051	0.034	7/29/2004
TX1029	0.747	0.658	0.631	0.049	0.034	8/26/2004
TX1063	0.774	0.719	0.682	0.029	0.034	9/2/2004
TX1152	0.768	0.726	0.692	0.145	0.034	9/20/2004
TX105	0.776	0.742	0.746	0.081	0.035	11/7/2003
TX399	0.788	0.704	0.636	0.075	0.035	1/8/2004
TX730	0.745	0.718	0.706	0.054	0.035	1/22/2004
TX1583	0.755	0.727	0.716	0.071	0.035	4/14/2004
TX1587	0.738	0.71	0.721	0.128	0.035	4/14/2004
TX1588	0.783	0.749	0.742	0.069	0.035	4/14/2004
TX1652	0.789	0.729	0.726	0.047	0.035	4/29/2004
TX1884	0.753	0.652	0.585	0.046	0.035	5/18/2004
TX1946	0.778	0.745	0.75	0.104	0.035	6/7/2004
TX2369	0.792	0.757	0.735	0.086	0.035	7/13/2004
TX2403	0.765	0.612	0.548	0.049	0.035	7/14/2004
TX1387	0.747	0.713	0.668	0.084	0.035	7/22/2004
TX1783	0.804	0.742	0.75	0.086	0.035	7/27/2004
TX1010	0.777	0.718	0.702	0.099	0.035	8/26/2004
TX1161	0.769	0.683	0.686	0.045	0.035	9/20/2004
TX1269	0.767	0.697	0.691	0.014	0.035	10/1/2004
TX1409	0.784	0.704	0.707	0.049	0.035	10/26/2004
TX173	0.717	0.702	0.691	0.169	0.036	11/11/2003
TX595	0.783	0.65	0.569	0.096	0.036	1/9/2004
TX1277	0.767	0.729	0.736	0.055	0.036	1/29/2004
TX1494	0.74	0.704	0.711	0.059	0.036	3/1/2004
TX1744	0.743	0.699	0.728	0.121	0.036	5/10/2004
TX1791	0.77	0.743	0.738	0.043	0.036	5/14/2004
TX1835	0.676	0.69	0.67	0.08	0.036	5/17/2004
TX1858	0.754	0.7	0.696	0.062	0.036	5/18/2004
TX1931	0.784	0.731	0.707	0.021	0.036	6/3/2004
TX1943	0.765	0.715	0.706	0.091	0.036	6/3/2004
TX2151	0.781	0.716	0.699	0.205	0.036	6/29/2004
TX2480	0.791	0.718	0.653	0.105	0.036	7/20/2004
TX1826	0.794	0.761	0.756	0.088	0.036	7/28/2004
TX2226	0.79	0.726	0.669	0.158	0.036	7/28/2004
TX770	0.791	0.707	0.664	0.043	0.036	8/3/2004
TX809	0.788	0.633	0.558	0.087	0.036	8/4/2004

TX4	0.758	0.69	0.641	0.099	0.037	10/31/2003
TX40	0.746	0.725	0.728	0.06	0.037	11/4/2003
TX1618	0.773	0.699	0.697	0.052	0.037	4/26/2004
TX2010	0.783	0.725	0.689	0.066	0.037	6/9/2004
TX2195	0.792	0.733	0.719	0.109	0.037	6/30/2004
TX1933	0.771	0.74	0.737	0.04	0.037	7/29/2004
TX757	0.775	0.728	0.718	0.191	0.037	8/3/2004
TX767	0.786	0.682	0.699	0.056	0.037	8/3/2004
TX1030	0.794	0.595	0.519	0.107	0.037	8/26/2004
TX1072	0.778	0.698	0.632	0.13	0.037	9/2/2004
TX1079	0.777	0.7	0.674	0.049	0.037	9/2/2004
TX36	0.775	0.724	0.651	0.36	0.038	10/31/2003
TX134	0.757	0.698	0.675	0.074	0.038	11/11/2003
TX191	0.746	0.695	0.676	0.146	0.038	11/13/2003
TX208	0.414	0.599	0.643	0.045	0.038	11/14/2003
TX705	0.752	0.682	0.72	0.167	0.038	1/22/2004
TX1493	0.729	0.717	0.716	0.056	0.038	3/1/2004
TX1844	0.767	0.727	0.719	0.097	0.038	3/18/2004
TX1850	0.738	0.687	0.706	0.036	0.038	3/18/2004
TX1937	0.759	0.716	0.727	0.056	0.038	3/18/2004
TX1544	0.573	0.58	0.619	0.058	0.038	3/25/2004
TX1660	0.769	0.741	0.733	0.074	0.038	4/29/2004
TX1989	0.778	0.675	0.678	0.039	0.038	6/8/2004
TX2166	0.779	0.747	0.739	0.162	0.038	6/29/2004
TX2384	0.786	0.703	0.65	0.089	0.038	7/13/2004
TX2481	0.789	0.763	0.769	0.076	0.038	7/20/2004
TX1780	0.756	0.689	0.69	0.127	0.038	7/27/2004
TX744	0.776	0.699	0.712	0.056	0.038	8/3/2004
TX1005	0.784	0.698	0.688	0.072	0.038	8/26/2004
TX1453	0.785	0.741	0.731	0.07	0.038	9/23/2004
TX1614	0.789	0.714	0.705	0.043	0.038	10/7/2004
TX1295	0.763	0.722	0.722	0.104	0.038	10/14/2004
TX1377	0.773	0.705	0.695	0.093	0.038	10/28/2004
TX16	0.716	0.693	0.643	0.039	0.039	11/4/2003
TX264	0.747	0.676	0.689	0.075	0.039	1/6/2004
TX682	0.715	0.725	0.727	0.05	0.039	1/20/2004
TX1144	0.748	0.705	0.694	0.056	0.039	1/28/2004
TX94	0.77	0.716	0.727	0.047	0.039	1/28/2004
TX1441	0.764	0.697	0.707	0.126	0.039	2/4/2004
TX1572	0.762	0.759	0.75	0.064	0.039	3/12/2004
TX1619	0.702	0.732	0.728	0.103	0.039	3/12/2004
TX1671	0.723	0.688	0.688	0.1	0.039	4/29/2004
TX1702	0.671	0.667	0.66	0.082	0.039	5/10/2004
TX1719	0.74	0.729	0.722	0.058	0.039	5/10/2004
TX2071	0.747	0.698	0.591	0.025	0.039	6/18/2004
TX2352	0.796	0.714	0.691	0.139	0.039	7/13/2004
TX2393	0.788	0.692	0.68	0.101	0.039	7/14/2004
TX123	0.79	0.687	0.668	0.135	0.039	7/22/2004
TX1903	0.771	0.717	0.713	0.076	0.039	7/28/2004
TX740	0.767	0.711	0.685	0.083	0.039	8/3/2004
TX812	0.78	0.726	0.717	0.297	0.039	8/18/2004

TX904	0.757	0.718	0.725	0.423	0.039	8/24/2004
TX1201	0.792	0.73	0.707	0.076	0.039	9/30/2004
TX19	0.757	0.661	0.673	0.076	0.04	11/4/2003
TX627	0.771	0.721	0.705	0.037	0.04	1/13/2004
TX1234(P)	0.767	0.739	0.732	0.258	0.04	1/28/2004
TX108	0.76	0.702	0.723	0.051	0.04	1/28/2004
TX1705	0.736	0.692	0.676	0.088	0.04	3/17/2004
TX1843	0.774	0.7	0.694	0.062	0.04	3/18/2004
TX1877	0.745	0.718	0.721	0.124	0.04	3/18/2004
TX1517	0.735	0.726	0.728	0.245	0.04	3/25/2004
TX1560	0.751	0.72	0.716	0.044	0.04	3/29/2004
TX1562	0.747	0.712	0.728	0.036	0.04	3/29/2004
TX1810	0.707	0.685	0.707	0.061	0.04	5/14/2004
TX1937	0.781	0.743	0.746	0.054	0.04	6/3/2004
TX2178	0.792	0.75	0.745	0.337	0.04	6/29/2004
TX2237	0.782	0.722	0.733	0.226	0.04	7/1/2004
TX2322	0.787	0.702	0.683	0.213	0.04	7/7/2004
TX2359	0.788	0.714	0.692	0.026	0.04	7/13/2004
TX2492	0.788	0.732	0.729	0.212	0.04	7/20/2004
TX1069	0.771	0.63	0.576	0.071	0.04	9/2/2004
TX1085	0.777	0.641	0.56	0.047	0.04	9/9/2004
TX1325	0.773	0.719	0.694	0.034	0.04	10/21/2004
TX44	0.77	0.733	0.679	0.138	0.041	10/31/2003
TX200	0.708	0.654	0.677	0.129	0.041	11/14/2003
TX326	0.705	0.669	0.644	0.052	0.041	1/7/2004
TX657	0.742	0.654	0.655	0.024	0.041	1/20/2004
TX1488	0.742	0.672	0.677	0.07	0.041	3/1/2004
TX1570	0.759	0.604	0.605	0.087	0.041	3/4/2004
TX1625	0.745	0.697	0.695	0.099	0.041	3/12/2004
TX1556	0.778	0.741	0.74	0.194	0.041	3/29/2004
TX1672	0.746	0.602	0.6	0.091	0.041	4/29/2004
TX1703	0.68	0.681	0.677	0.067	0.041	5/10/2004
TX1805	0.712	0.689	0.689	0.063	0.041	5/14/2004
TX2141	0.785	0.727	0.713	0.094	0.041	6/29/2004
TX2143	0.767	0.687	0.683	0.162	0.041	6/29/2004
TX2144	0.776	0.69	0.684	0.12	0.041	6/29/2004
TX2302	0.759	0.642	0.636	0.123	0.041	7/7/2004
TX2357	0.769	0.71	0.708	0.069	0.041	7/13/2004
TX763	0.794	0.74	0.728	0.152	0.041	8/3/2004
TX791	0.759	0.691	0.703	0.086	0.041	8/4/2004
TX814	0.768	0.705	0.721	0.097	0.041	8/18/2004
TX953	0.78	0.67	0.59	0.276	0.041	8/24/2004
TX1020	0.772	0.733	0.728	0.042	0.041	8/26/2004
TX176	0.776	0.703	0.682	0.079	0.041	9/21/2004
TX1224	0.79	0.635	0.567	0.069	0.041	9/30/2004
TX1270	0.77	0.738	0.721	0.149	0.041	10/1/2004
TX1296	0.777	0.738	0.736	0.081	0.041	10/14/2004
TX1350	0.773	0.708	0.706	0.09	0.041	10/19/2004
TX292	0.761	0.658	0.663	0.04	0.042	1/6/2004
TX718	0.768	0.735	0.746	0.056	0.042	1/22/2004
TX728	0.721	0.693	0.682	0.102	0.042	1/22/2004

TX1477	0.726	0.723	0.735	0.066	0.042	3/1/2004
TX1552	0.76	0.736	0.731	0.109	0.042	3/4/2004
TX1700	0.747	0.726	0.71	0.129	0.042	3/17/2004
TX1535	0.723	0.702	0.705	0.075	0.042	3/25/2004
TX1651	0.777	0.704	0.692	0.05	0.042	4/29/2004
TX1665	0.776	0.721	0.715	0.101	0.042	4/29/2004
TX1738	0.717	0.642	0.627	0.018	0.042	5/10/2004
TX1761	0.725	0.695	0.694	0.041	0.042	5/12/2004
TX1908	0.766	0.67	0.655	0.109	0.042	5/19/2004
TX1934	0.775	0.709	0.739	0.092	0.042	6/3/2004
TX1942	0.77	0.734	0.704	0.061	0.042	6/3/2004
TX2007	0.783	0.704	0.715	0.146	0.042	6/9/2004
TX2011	0.79	0.731	0.694	0.137	0.042	6/9/2004
TX2111	0.78	0.687	0.684	0.189	0.042	6/23/2004
TX2186	0.777	0.716	0.687	0.074	0.042	6/30/2004
TX2188	0.776	0.709	0.709	0.114	0.042	6/30/2004
TX2193	0.802	0.726	0.712	0.183	0.042	6/30/2004
TX2247	0.782	0.74	0.75	0.057	0.042	7/1/2004
TX2297	0.772	0.711	0.669	0.142	0.042	7/7/2004
TX2442	0.784	0.739	0.72	0.034	0.042	7/15/2004
TX1706	0.787	0.73	0.67	0.169	0.042	7/27/2004
TX2238	0.777	0.748	0.746	0.034	0.042	7/29/2004
TX1062	0.773	0.719	0.714	0.055	0.042	9/2/2004
TX1089	0.781	0.678	0.593	0.081	0.042	9/9/2004
TX1094	0.78	0.671	0.607	0.059	0.042	9/9/2004
TX1109	0.784	0.63	0.487	0.181	0.042	9/9/2004
TX1182	0.789	0.716	0.698	0.053	0.042	9/21/2004
TX1452	0.783	0.744	0.73	0.145	0.042	9/23/2004
TX1216	0.761	0.578	0.579	0.081	0.042	9/30/2004
TX1108	0.773	0.663	0.584	0.066	0.042	10/14/2004
TX1114	0.75	0.596	0.614	0.062	0.042	10/14/2004
TX1420	0.792	0.689	0.677	0.099	0.042	10/28/2004
TX139	0.77	0.675	0.656	0.121	0.043	11/10/2003
TX298	0.754	0.538	0.431	0.085	0.043	1/6/2004
TX310	0.767	0.549	0.513	0.09	0.043	1/7/2004
TX315	0.743	0.461	0.446	0.095	0.043	1/7/2004
TX634	0.76	0.698	0.712	0.043	0.043	1/13/2004
TX18	0.743	0.671	0.669	0.051	0.043	1/28/2004
TX1452	0.768	0.705	0.714	0.176	0.043	2/4/2004
TX1573	0.736	0.737	0.738	0.11	0.043	3/12/2004
TX1636	0.794	0.726	0.725	0.086	0.043	4/26/2004
TX1649	0.792	0.733	0.738	0.159	0.043	4/26/2004
TX1859	0.777	0.746	0.739	0.099	0.043	5/18/2004
TX2017	0.777	0.716	0.728	0.146	0.043	6/9/2004
TX2080	0.747	0.697	0.691	0.111	0.043	6/22/2004
TX2292	0.792	0.632	0.638	0.068	0.043	7/7/2004
TX2371	0.779	0.715	0.7	0.113	0.043	7/13/2004
TX2408	0.78	0.732	0.707	0.19	0.043	7/14/2004
TX2419	0.794	0.723	0.703	0.099	0.043	7/15/2004
TX1015	0.785	0.647	0.637	0.067	0.043	8/26/2004
TX1054	0.792	0.729	0.746	0.076	0.043	9/2/2004

TX1078	0.774	0.554	0.495	0.027	0.043	9/2/2004
TX1195	0.782	0.593	0.569	0.101	0.043	9/23/2004
TX98	0.785	0.673	0.483	0.033	0.044	11/6/2003
TX184	0.643	0.681	0.682	0.314	0.044	11/14/2003
TX198	0.727	No Data	0.69	0.132	0.044	11/14/2003
TX597	0.779	0.718	0.709	0.056	0.044	1/9/2004
TX677	0.72	0.718	0.717	0.08	0.044	1/20/2004
TX1314	0.747	0.737	0.711	0.056	0.044	1/29/2004
TX1478	0.759	0.705	0.71	0.073	0.044	3/1/2004
TX1525	0.752	0.718	0.722	0.07	0.044	3/4/2004
TX1762	0.744	0.681	0.698	0.075	0.044	3/17/2004
TX1553	0.775	0.72	0.708	0.109	0.044	3/29/2004
TX1586	0.753	0.716	0.721	0.255	0.044	4/14/2004
TX1663	0.756	0.711	0.705	0.114	0.044	4/29/2004
TX1778	0.777	0.729	0.714	0.104	0.044	5/12/2004
TX1787	0.772	0.744	0.734	0.108	0.044	5/12/2004
TX1802	0.712	0.719	0.722	0.047	0.044	5/14/2004
TX2006	0.785	0.712	0.686	0.097	0.044	6/9/2004
TX2122	0.753	0.709	0.699	0.115	0.044	6/23/2004
TX2128	0.779	0.71	0.687	0.319	0.044	6/23/2004
TX2280	0.787	0.736	0.731	0.074	0.044	7/7/2004
TX2301	0.747	0.644	0.6	0.097	0.044	7/7/2004
TX2331	0.779	0.695	0.684	0.188	0.044	7/8/2004
TX2356	0.781	0.707	0.673	0.131	0.044	7/13/2004
TX2412	0.786	0.708	0.702	0.067	0.044	7/15/2004
TX2510	0.787	0.56	0.4	0.096	0.044	7/22/2004
TX1515	0.791	0.712	0.714	0.03	0.044	7/27/2004
TX1034	0.765	0.659	0.635	0.037	0.044	8/26/2004
TX1057	0.708	0.674	0.675	0.081	0.044	9/2/2004
TX1099	0.77	0.64	0.563	0.2	0.044	9/9/2004
TX1417	0.78	0.677	0.611	0.138	0.044	9/23/2004
TX1250	0.774	0.573	0.51	0.061	0.044	9/30/2004
TX1135	0.789	0.739	0.71	0.102	0.044	10/8/2004
TX1441	0.789	0.74	0.73	0.108	0.044	11/11/2004
TX91	0.791	No Data	0.668	0.099	0.045	11/6/2003
TX684	0.701	0.731	0.728	0.085	0.045	1/20/2004
TX1581	0.734	0.717	0.723	0.008	0.045	3/12/2004
TX1579	0.745	0.714	0.718	0.079	0.045	3/29/2004
TX1601	0.735	0.695	0.697	0.127	0.045	4/14/2004
TX1658	0.775	0.758	0.721	0.074	0.045	4/29/2004
TX1742	0.751	0.661	0.61	0.118	0.045	5/10/2004
TX1813	0.765	0.675	0.682	0.093	0.045	5/14/2004
TX1865	0.726	0.713	0.671	0.07	0.045	5/18/2004
TX1869	0.769	0.748	0.743	0.07	0.045	5/18/2004
TX2315	0.798	0.739	0.729	0.114	0.045	7/7/2004
TX2366	0.769	0.726	0.711	0.115	0.045	7/13/2004
TX739	0.764	0.707	0.7	0.087	0.045	8/3/2004
TX771	0.768	0.737	0.694	0.169	0.045	8/3/2004
TX849	0.748	0.702	0.701	0.077	0.045	8/18/2004
TX1076	0.769	0.697	0.662	0.054	0.045	9/2/2004
TX1210	0.79	0.723	0.696	0.069	0.045	9/30/2004

TX1252	0.785	0.666	0.612	0.105	0.045	9/30/2004
TX1359	0.778	0.681	0.673	0.042	0.045	10/19/2004
TX1423	0.766	0.483	0.376	0.048	0.045	10/28/2004
TX117	0.77	0.712	0.685	0.055	0.046	11/10/2003
TX408	0.782	0.684	0.652	0.052	0.046	1/8/2004
TX495	0.767	0.533	0.454	0.12	0.046	1/9/2004
TX1739	0.739	0.707	0.703	0.085	0.046	3/17/2004
TX1567	0.768	0.726	0.707	0.049	0.046	3/29/2004
TX1629	0.753	0.742	0.734	0.085	0.046	4/26/2004
TX1630	0.782	0.726	0.703	0.097	0.046	4/26/2004
TX1772	0.764	0.727	0.734	0.128	0.046	5/12/2004
TX2129	0.772	0.711	0.668	0.145	0.046	6/23/2004
TX2217	0.8	0.761	0.755	0.1	0.046	7/1/2004
TX2241	0.773	0.733	0.744	0.128	0.046	7/1/2004
TX1257	0.788	0.617	0.504	0.189	0.046	9/30/2004
TX1327	0.796	0.723	0.681	0.113	0.046	10/21/2004
TX45	0.783	0.7	0.566	0.026	0.047	11/6/2003
TX99	0.784	No Data	0.681	0.007	0.047	11/6/2003
TX252	0.784	0.693	0.684	0.088	0.047	11/18/2003
TX263	0.448	0.407	0.391	0.151	0.047	11/21/2003
TX118	0.712	0.687	0.655	0.144	0.047	12/2/2003
TX700	0.709	0.657	0.699	0.104	0.047	1/22/2004
TX1274	0.749	0.735	0.71	0.109	0.047	1/29/2004
TX1335	0.769	0.74	0.721	0.077	0.047	1/29/2004
TX1466	0.74	0.657	0.695	0.12	0.047	3/1/2004
TX1545	0.77	0.704	0.719	0.085	0.047	3/4/2004
TX1661	0.774	0.75	0.754	0.099	0.047	4/29/2004
TX1964	0.755	0.694	0.613	0.085	0.047	6/7/2004
TX2053	0.79	0.77	0.746	0.036	0.047	6/10/2004
TX2107	0.789	0.72	0.705	0.101	0.047	6/23/2004
TX2184	0.782	0.721	0.695	0.203	0.047	6/29/2004
TX2354	0.776	0.726	0.731	0.065	0.047	7/13/2004
TX2428	0.787	0.727	0.715	0.069	0.047	7/15/2004
TX2458	0.794	0.774	0.764	0.072	0.047	7/20/2004
TX2482	0.791	0.774	0.757	0.073	0.047	7/20/2004
TX1459	0.78	0.746	0.732	0.127	0.047	7/22/2004
TX749	0.762	0.706	0.671	0.088	0.047	8/3/2004
TX802	0.783	0.699	0.698	0.07	0.047	8/4/2004
TX833	0.779	0.73	0.733	0.155	0.047	8/18/2004
TX1032	0.779	0.683	0.656	0.027	0.047	8/26/2004
TX1075	0.776	0.712	0.695	0.028	0.047	9/2/2004
TX1171	0.789	0.734	0.717	0.062	0.047	9/21/2004
TX1242	0.766	0.689	0.665	0.048	0.047	9/30/2004
TX2448	0.777	0.729	0.726	0.042	0.047	10/8/2004
TX1123	0.779	0.609	0.412	0.091	0.047	10/14/2004
TX1411	0.781	0.667	0.658	0.076	0.047	10/28/2004
TX161	0.772	0.703	0.711	0.078	0.048	11/10/2003
TX182	0.715	0.689	0.694	0.074	0.048	11/13/2003
TX223	0.738	0.685	0.652	0.049	0.048	11/18/2003
TX238	0.78	0.748	0.752	0.191	0.048	11/18/2003
TX304	0.747	0.495	0.399	0.045	0.048	1/7/2004

TX611	0.76	0.645	0.586	0.062	0.048	1/13/2004
TX717	0.729	0.703	0.69	0.08	0.048	1/22/2004
TX1238	0.757	0.715	0.69	0.137	0.048	1/28/2004
TX89	0.761	0.71	0.718	0.074	0.048	1/28/2004
TX1484	0.739	0.694	0.693	0.049	0.048	3/1/2004
TX1486	0.726	0.659	0.682	0.051	0.048	3/1/2004
TX1505	0.76	0.745	0.729	0.066	0.048	3/4/2004
TX1745	0.759	0.684	0.683	0.096	0.048	5/10/2004
TX1758	0.776	0.74	0.725	0.091	0.048	5/12/2004
TX1776	0.76	0.743	0.706	0.108	0.048	5/12/2004
TX1824	0.747	0.679	0.673	0.075	0.048	5/17/2004
TX1900	0.761	0.733	0.742	0.096	0.048	5/19/2004
TX1940	0.783	0.741	0.754	0.146	0.048	6/3/2004
TX2245	0.764	0.737	0.736	0.091	0.048	7/1/2004
TX2486	0.774	0.756	0.738	0.166	0.048	7/20/2004
TX1480	0.763	0.722	0.691	0.081	0.048	7/22/2004
TX1593	0.782	0.742	0.731	0.12	0.048	7/27/2004
TX945	0.771	0.709	0.695	0.097	0.048	8/24/2004
TX1065	0.766	0.71	0.711	0.073	0.048	9/2/2004
TX1068	0.771	0.714	0.69	0.197	0.048	9/2/2004
TX1222	0.783	0.712	0.693	0.073	0.048	9/30/2004
TX1278	0.754	0.709	0.699	0.106	0.048	10/1/2004
TX1980	0.75	0.695	0.674	0.102	0.048	10/8/2004
TX1126	0.768	0.732	0.719	0.279	0.048	10/14/2004
TX1403	0.769	0.73	0.71	0.323	0.048	10/26/2004
TX63	0.767	0.662	0.614	0.103	0.049	11/6/2003
TX234	0.782	0.731	0.722	0.054	0.049	11/18/2003
TX1688	0.751	0.724	0.731	0.072	0.049	3/17/2004
TX1803	0.672	0.7	0.679	0.03	0.049	5/14/2004
TX2055	0.788	0.737	0.701	0.03	0.049	6/15/2004
TX2147	0.756	0.684	0.691	0.118	0.049	6/29/2004
TX2381	0.791	0.74	0.725	0.121	0.049	7/13/2004
TX2416	0.798	0.738	0.716	0.07	0.049	7/15/2004
TX2418	0.781	0.729	0.723	0.135	0.049	7/15/2004
TX1043	0.785	0.724	0.706	0.096	0.049	9/2/2004
TX1170	0.777	0.647	0.547	0.065	0.049	9/20/2004
TX1301	0.769	0.714	0.679	0.068	0.049	10/14/2004
TX6	0.788	0.723	0.695	0.022	0.05	11/4/2003
TX64	0.784	0.711	0.504	0.054	0.05	11/6/2003
TX77	0.773	0.692	0.634	0.036	0.05	11/6/2003
TX216	0.734	0.715	0.723	0.071	0.05	11/14/2003
TX242	0.788	0.744	0.744	0.144	0.05	11/18/2003
TX621	0.756	0.666	0.645	0.094	0.05	1/13/2004
TX661	0.75	0.707	0.71	0.029	0.05	1/20/2004
TX1492	0.76	0.696	0.686	0.074	0.05	3/1/2004
TX1668	0.688	0.696	0.7	0.23	0.05	3/12/2004
TX1691	0.766	0.691	0.706	0.113	0.05	3/17/2004
TX1737	0.758	0.71	0.723	0.076	0.05	3/17/2004
TX1793	0.713	0.654	0.647	0.084	0.05	3/17/2004
TX1821	0.728	0.655	0.658	0.076	0.05	3/17/2004
TX1566	0.719	0.688	0.7	0.116	0.05	3/29/2004

TX1978	0.777	0.732	0.739	0.112	0.05	6/8/2004
TX1986	0.781	0.729	0.731	0.09	0.05	6/8/2004
TX2065	0.778	0.663	0.572	0.02	0.05	6/15/2004
TX2328	0.778	0.728	0.701	0.088	0.05	7/14/2004
TX2438	0.782	0.747	0.741	0.237	0.05	7/15/2004
TX2497	0.783	0.742	0.727	0.136	0.05	7/20/2004
TX1481	0.777	0.731	0.724	0.074	0.05	7/28/2004
TX787	0.761	0.686	0.69	0.12	0.05	8/4/2004
TX879	0.797	0.753	0.721	0.127	0.05	8/18/2004
TX1092	0.781	0.693	0.652	0.178	0.05	9/9/2004
TX1685	0.769	0.628	0.562	0.04	0.05	9/23/2004
TX1214	0.775	0.722	0.706	0.118	0.05	9/30/2004
TX710	0.781	0.725	0.705	0.086	0.05	10/8/2004
TX1346	0.76	0.709	0.665	0.114	0.05	10/21/2004
TX1413	0.745	0.647	0.647	0.053	0.05	10/26/2004
TX1437	0.786	0.757	0.753	0.073	0.05	10/28/2004
TX314	0.741	0.668	0.672	0.12	0.051	1/7/2004
TX1502	0.761	0.692	0.693	0.084	0.051	3/4/2004
TX1650	0.724	0.72	0.72	0.129	0.051	3/12/2004
TX1576	0.731	0.662	0.684	0.099	0.051	3/29/2004
TX1604	0.717	0.648	0.679	0.084	0.051	4/14/2004
TX1767	0.73	0.725	0.747	0.043	0.051	5/12/2004
TX1842	0.721	0.724	0.73	0.07	0.051	5/17/2004
TX1905	0.775	0.689	0.682	0.041	0.051	5/19/2004
TX1990	0.759	0.685	0.639	0.045	0.051	6/8/2004
TX2127	0.751	0.618	0.595	0.193	0.051	6/23/2004
TX2309	0.786	0.71	0.698	0.05	0.051	7/7/2004
TX2317	0.793	0.742	0.714	0.087	0.051	7/7/2004
TX2319	0.794	0.693	0.646	0.21	0.051	7/7/2004
TX1711	0.785	0.751	0.753	0.209	0.051	7/27/2004
TX813	0.761	0.701	0.699	0.033	0.051	8/18/2004
TX1164	0.766	0.726	0.721	0.047	0.051	9/20/2004
TX1165	0.779	0.73	0.722	0.091	0.051	9/20/2004
TX1596	0.776	0.694	0.666	0.075	0.051	9/23/2004
TX1132	0.775	0.737	0.729	0.035	0.051	10/8/2004
TX1306	0.764	0.733	0.726	0.07	0.051	10/14/2004
TX1330	0.773	0.701	0.604	0.086	0.051	10/21/2004
TX1402	0.773	0.74	0.737	0.051	0.051	10/26/2004
TX56	0.756	0.703	0.648	0.089	0.052	11/4/2003
TX146	0.758	0.725	0.729	0.046	0.052	11/11/2003
TX499	0.773	0.555	0.487	0.017	0.052	1/9/2004
TX1638	0.784	0.727	0.733	0.127	0.052	4/26/2004
TX1755	0.775	0.736	0.744	0.13	0.052	5/12/2004
TX1771	0.734	0.704	0.703	0.058	0.052	5/12/2004
TX1893	0.748	0.712	0.685	0.098	0.052	5/19/2004
TX1902	0.781	0.72	0.638	0.089	0.052	5/19/2004
TX2120	0.785	0.715	0.678	0.089	0.052	6/23/2004
TX2181	0.782	0.636	0.603	0.08	0.052	6/29/2004
TX2251	0.784	0.748	0.747	0.117	0.052	7/1/2004
TX2504	0.79	0.746	0.738	0.161	0.052	7/20/2004
TX1549	0.783	0.731	0.726	0.04	0.052	7/27/2004

TX1952	0.766	0.731	0.724	0.04	0.052	7/28/2004
TX769	0.783	0.691	0.687	0.038	0.052	8/3/2004
TX808	0.785	0.74	0.718	0.291	0.052	8/4/2004
TX832	0.788	0.74	0.737	0.091	0.052	8/18/2004
TX1009	0.799	0.735	0.747	0.088	0.052	8/26/2004
TX2409	0.797	0.745	0.729	0.119	0.052	9/9/2004
TX177	0.775	0.69	0.665	0.073	0.052	9/21/2004
TX1120	0.701	0.591	0.419	0.051	0.052	10/14/2004
TX1119	0.759	0.608	0.515	0.096	0.052	10/14/2004
TX1324	0.769	0.718	0.712	0.064	0.052	10/21/2004
TX142	0.739	0.7	0.706	0.051	0.053	11/11/2003
TX132	0.509	0.599	0.576	0.068	0.053	11/11/2003
TX192	0.766	0.701	0.696	0.116	0.053	11/13/2003
TX268	0.74	0.681	0.671	0.09	0.053	1/6/2004
TX732	0.768	0.763	0.747	0.088	0.053	1/22/2004
TX1430	0.749	0.716	0.721	0.095	0.053	2/4/2004
TX1574	0.692	0.662	0.606	0.02	0.053	3/12/2004
TX1678	0.614	0.7	0.689	0.098	0.053	3/12/2004
TX1860	0.736	0.74	0.738	0.055	0.053	3/18/2004
TX1536	0.709	0.685	0.709	0.071	0.053	3/25/2004
TX1832	0.69	0.702	0.709	0.136	0.053	5/17/2004
TX1921	0.779	0.756	0.754	0.064	0.053	6/3/2004
TX1925	0.777	0.761	0.74	0.227	0.053	6/3/2004
TX1927	0.762	0.703	0.711	0.09	0.053	6/3/2004
TX1932	0.79	0.724	0.724	0.058	0.053	6/3/2004
TX1977	0.786	0.753	0.759	0.199	0.053	6/8/2004
TX2021	0.738	0.685	0.677	0.265	0.053	6/15/2004
TX2063	0.773	0.646	0.597	0.075	0.053	6/15/2004
TX2094	0.76	0.666	0.65	0.061	0.053	6/22/2004
TX2133	0.766	0.683	0.677	0.063	0.053	6/24/2004
TX2149	0.687	0.57	0.59	0.164	0.053	6/29/2004
TX2196	0.781	0.716	0.698	0.056	0.053	6/30/2004
TX2348	0.78	0.723	0.702	0.083	0.053	7/13/2004
TX2349	0.787	0.732	0.726	0.127	0.053	7/13/2004
TX2379	0.784	0.759	0.736	0.153	0.053	7/13/2004
TX2483	0.778	0.719	0.693	0.056	0.053	7/20/2004
TX753	0.796	0.73	0.725	0.12	0.053	8/3/2004
TX1160	0.778	0.737	0.711	0.16	0.053	9/20/2004
TX1209	0.762	0.71	0.7	0.032	0.053	9/30/2004
TX2035	0.796	0.674	0.672	0.134	0.053	10/7/2004
TX1326	0.784	0.705	0.68	0.085	0.053	10/21/2004
TX1400	0.784	0.727	0.727	0.053	0.053	10/26/2004
TX29	0.775	0.709	0.682	0.049	0.054	11/4/2003
TX109	0.789	0.711	0.594	0.077	0.054	11/7/2003
TX224	0.77	0.715	0.709	0.046	0.054	11/18/2003
TX601	0.784	0.657	0.671	0.112	0.054	1/9/2004
TX1928	0.759	0.692	0.708	0.107	0.054	3/18/2004
TX1591	0.767	0.721	0.751	0.122	0.054	4/14/2004
TX1768	0.747	0.725	0.703	0.0115	0.054	5/12/2004
TX1923	0.779	0.739	0.725	0.118	0.054	6/3/2004
TX2060	0.786	0.753	0.708	0.098	0.054	6/15/2004

TX2106	0.78	0.655	0.631	0.263	0.054	6/22/2004
TX2185	0.92	0.594	0.58	0.039	0.054	6/30/2004
TX2227	0.788	0.754	0.741	0.118	0.054	7/1/2004
TX2373	0.787	0.726	0.709	0.08	0.054	7/13/2004
TX2385	0.777	0.68	0.66	0.147	0.054	7/13/2004
TX2496	0.786	0.694	0.663	0.107	0.054	7/20/2004
TX1827	0.782	0.719	0.724	0.108	0.054	7/28/2004
TX1142	0.778	0.728	0.706	0.096	0.054	10/8/2004
TX58	0.79	0.704	0.593	0.096	0.055	11/6/2003
TX219	0.686	0.648	0.671	0.12	0.055	11/14/2003
TX255	0.781	0.708	0.706	0.119	0.055	11/18/2003
TX295	0.741	0.453	0.432	0.091	0.055	1/6/2004
TX1595	0.769	0.743	0.738	0.214	0.055	3/12/2004
TX1923	0.768	0.744	0.74	0.092	0.055	3/18/2004
TX1539	0.706	0.6	0.63	0.065	0.055	3/25/2004
TX1657	0.774	0.725	0.722	0.11	0.055	4/29/2004
TX1753	0.761	0.698	0.706	0.094	0.055	5/12/2004
TX2105	0.786	0.736	0.723	0.064	0.055	6/22/2004
TX2135	0.777	0.621	0.579	0.125	0.055	6/24/2004
TX2346	0.773	0.667	0.624	0.22	0.055	7/8/2004
TX2363	0.784	0.699	0.647	0.096	0.055	7/13/2004
TX2367	0.782	0.703	0.694	0.28	0.055	7/13/2004
TX2445	0.781	0.736	0.706	0.112	0.055	7/15/2004
TX2466	0.776	0.695	0.686	0.101	0.055	7/20/2004
TX2498	0.787	0.739	0.737	0.12	0.055	7/20/2004
TX1782	0.794	0.755	0.759	0.061	0.055	7/27/2004
TX1007	0.781	0.587	0.551	0.086	0.055	8/26/2004
TX2257	0.783	0.73	0.72	0.186	0.055	9/9/2004
TX1254	0.778	0.721	0.688	0.261	0.055	9/30/2004
TX1408	0.787	0.712	0.716	0.048	0.055	10/26/2004
TX1419	0.789	0.714	0.701	0.099	0.055	10/28/2004
TX72	0.76	0.714	0.685	0.112	0.056	11/7/2003
TX178	0.748	0.716	0.72	0.111	0.056	11/13/2003
TX1262	0.768	0.716	0.726	0.096	0.056	1/29/2004
TX1437	0.761	0.62	0.564	0.14	0.056	2/4/2004
TX1496	0.769	0.689	0.702	0.057	0.056	3/4/2004
TX1845	0.734	0.698	0.718	0.109	0.056	3/18/2004
TX1532	0.443	0.441	0.471	0.122	0.056	3/25/2004
TX1915	0.76	0.685	0.651	0.094	0.056	5/19/2004
TX1917	0.761	0.69	0.686	0.104	0.056	6/3/2004
TX1947	0.791	0.747	0.743	0.068	0.056	6/7/2004
TX1981	0.771	0.714	0.715	0.14	0.056	6/8/2004
TX1993	0.781	0.728	0.716	0.079	0.056	6/8/2004
TX2231	0.783	0.726	0.694	0.096	0.056	7/1/2004
TX2291	0.773	0.687	0.668	0.014	0.056	7/7/2004
TX2372	0.784	0.722	0.701	0.19	0.056	7/13/2004
TX2420	0.787	0.685	0.683	0.102	0.056	7/15/2004
TX2443	0.794	0.725	0.718	0.093	0.056	7/15/2004
TX2516	0.772	0.672	0.647	0.081	0.056	7/22/2004
TX1592	0.781	0.748	0.744	0.072	0.056	7/27/2004
TX765	0.787	0.724	0.703	0.121	0.056	8/3/2004

TX1023	0.777	0.593	0.542	0.076	0.056	8/26/2004
TX1107	0.777	0.709	0.703	0.408	0.056	10/14/2004
TX1348	0.761	0.711	0.696	0.22	0.056	10/19/2004
TX1331	0.781	0.743	0.733	0.056	0.056	10/21/2004
TX230	0.751	0.652	0.649	0.091	0.057	11/14/2003
TX1612	0.753	0.674	0.651	0.111	0.057	4/14/2004
TX1856	0.724	0.705	0.713	0.022	0.057	5/18/2004
TX1891	0.772	0.715	0.727	0.093	0.057	5/19/2004
TX2330	0.781	0.671	0.554	0.122	0.057	7/8/2004
TX1775	0.782	0.744	0.726	0.32	0.057	7/27/2004
TX994	0.779	0.679	0.651	0.07	0.057	8/24/2004
TX170	0.765	0.712	0.717	0.042	0.057	9/21/2004
TX1136	0.78	0.731	0.725	0.069	0.057	10/8/2004
TX1447	0.745	0.699	0.662	0.078	0.057	11/11/2004
TX498	0.775	0.673	0.61	0.037	0.058	1/9/2004
TX1425	0.768	0.713	0.702	0.15	0.058	2/4/2004
TX1635	0.725	0.696	0.693	0.218	0.058	3/12/2004
TX1777	0.721	0.694	0.695	0.082	0.058	3/17/2004
TX1794	0.742	0.714	0.712	0.109	0.058	5/14/2004
TX1806	0.719	0.641	0.644	0.067	0.058	5/14/2004
TX1829	0.703	0.694	0.677	0.12	0.058	5/17/2004
TX1949	0.786	0.733	0.744	0.105	0.058	6/7/2004
TX2051	0.794	0.756	0.764	0.128	0.058	6/10/2004
TX2137	0.743	0.669	0.626	0.087	0.058	6/24/2004
TX2152	0.764	0.644	0.634	0.051	0.058	6/29/2004
TX2290	0.784	0.724	0.699	0.188	0.058	7/7/2004
TX2490	0.783	0.735	0.73	0.072	0.058	7/20/2004
TX1504	0.769	0.658	0.613	0.077	0.058	7/22/2004
TX1962	0.78	0.701	0.671	0.111	0.058	9/23/2004
TX1225	0.783	0.702	0.672	0.087	0.058	9/30/2004
TX1360	0.767	0.708	0.707	0.061	0.058	10/19/2004
TX368	0.783	0.553	0.593	0.091	0.059	1/8/2004
TX529	0.784	0.425	0.438	0.087	0.059	1/9/2004
TX234	0.782	0.729	0.732	0.229	0.059	1/29/2004
TX1520	0.73	0.688	0.718	0.104	0.059	3/25/2004
TX1639	0.775	0.733	0.723	0.036	0.059	4/26/2004
TX1667	0.78	0.694	0.685	0.131	0.059	4/29/2004
TX1849	0.642	0.635	0.626	0.123	0.059	5/17/2004
TX2064	0.779	0.687	0.648	0.054	0.059	6/15/2004
TX2158	0.751	0.61	0.579	0.103	0.059	6/29/2004
TX2254	0.781	0.722	0.692	0.139	0.059	7/1/2004
TX2353	0.787	0.765	0.757	0.101	0.059	7/13/2004
TX2374	0.79	0.75	0.756	0.13	0.059	7/13/2004
TX2014	0.783	0.69	0.71	0.111	0.059	7/29/2004
TX2200	0.789	0.723	0.696	0.064	0.059	9/9/2004
TX1349	0.76	0.706	0.689	0.095	0.059	10/19/2004
TX187	0.659	0.648	0.649	0.146	0.06	11/14/2003
TX610	0.774	0.687	0.647	0.062	0.06	1/13/2004
TX654	0.763	0.711	0.704	0.13	0.06	1/20/2004
TX1499	0.749	0.664	0.675	0.091	0.06	3/4/2004
TX1864	0.751	0.75	0.743	0.247	0.06	3/18/2004

TX1655	0.776	0.738	0.711	0.061	0.06	4/29/2004
TX1801	0.763	0.739	0.736	0.076	0.06	5/14/2004
TX2132	0.785	0.682	0.69	0.031	0.06	6/24/2004
TX2138	0.742	0.663	0.612	0.118	0.06	6/24/2004
TX1622	0.766	0.697	0.647	0.05	0.06	7/27/2004
TX735	0.794	0.761	0.768	0.111	0.06	8/3/2004
TX742	0.783	0.736	0.714	0.099	0.06	8/3/2004
TX788	0.775	0.701	0.688	0.273	0.06	8/4/2004
TX1082	0.8	0.655	0.591	0.086	0.06	9/2/2004
TX1995	0.783	0.709	0.679	0.063	0.06	9/9/2004
TX2339	0.787	0.723	0.706	0.113	0.06	10/7/2004
TX1116	0.794	0.733	0.714	0.037	0.06	10/14/2004
TX1424	0.782	0.663	0.66	0.089	0.06	10/28/2004
TX1442	0.779	0.737	0.742	0.121	0.06	11/11/2004
TX78	0.788	No Data	0.695	0.028	0.061	11/6/2003
TX102	0.764	No Data	0.517	0.015	0.061	11/6/2003
TX71	0.742	0.692	0.684	0.179	0.061	11/7/2003
TX320	0.719	0.652	0.666	0.09	0.061	1/7/2004
TX380	0.78	0.704	0.675	0.076	0.061	1/8/2004
TX702	0.712	0.643	0.699	0.125	0.061	1/22/2004
TX1381	0.762	0.723	0.689	0.15	0.061	2/4/2004
TX1442	0.754	0.73	0.722	0.101	0.061	2/4/2004
TX1503	0.763	0.687	0.672	0.126	0.061	3/4/2004
TX1839	0.658	0.697	0.713	0.09	0.061	5/17/2004
TX1910	0.753	0.691	0.698	0.074	0.061	5/19/2004
TX2004	0.774	0.694	0.648	0.101	0.061	6/9/2004
TX2164	0.781	0.723	0.708	0.082	0.061	6/29/2004
TX2268	0.78	0.729	0.722	0.223	0.061	7/1/2004
TX2494	0.792	0.731	0.692	0.108	0.061	7/20/2004
TX1846	0.784	0.73	0.722	0.015	0.061	7/28/2004
TX745	0.766	0.694	0.7	0.047	0.061	8/3/2004
TX754	0.787	0.706	0.687	0.148	0.061	8/3/2004
TX1357	0.776	0.704	0.722	0.125	0.061	10/19/2004
TX246	0.784	0.713	0.682	0.16	0.062	11/18/2003
TX339	0.781	0.442	0.413	0.066	0.062	1/8/2004
TX1530	0.759	0.63	0.645	0.078	0.062	3/4/2004
TX1516	0.755	0.727	0.727	0.138	0.062	3/25/2004
TX1930	0.766	0.732	0.68	0.046	0.062	6/3/2004
TX2070	0.768	0.727	0.706	0.059	0.062	6/18/2004
TX2502	0.786	0.728	0.732	0.091	0.062	7/20/2004
TX2218	0.793	0.762	0.765	0.095	0.062	7/29/2004
TX806	0.77	0.715	0.713	0.119	0.062	8/4/2004
TX903	0.773	0.735	0.722	0.074	0.062	8/24/2004
TX984	0.793	0.723	0.682	0.145	0.062	8/24/2004
TX2012	0.79	0.73	0.628	0.195	0.062	9/9/2004
TX1284	0.785	0.723	0.714	0.059	0.062	10/7/2004
TX1147	0.783	0.671	0.623	0.067	0.062	10/7/2004
TX1111	0.776	0.621	0.505	0.063	0.062	10/14/2004
TX305	0.719	0.609	0.537	0.06	0.063	1/7/2004
TX1286	0.758	0.734	0.707	0.107	0.063	1/29/2004
TX1508	0.704	0.696	0.657	0.135	0.063	3/18/2004

TX1534	0.733	0.701	0.713	0.123	0.063	3/25/2004
TX1620	0.739	0.654	0.655	0.364	0.063	4/26/2004
TX1749	0.779	0.75	0.734	0.098	0.063	5/12/2004
TX1812	0.675	0.658	0.657	0.069	0.063	5/14/2004
TX1828	0.686	0.625	0.665	0.083	0.063	5/17/2004
TX1913	0.762	0.714	0.715	0.104	0.063	5/19/2004
TX1944	0.762	0.656	0.646	0.042	0.063	6/7/2004
TX1954	0.791	0.766	0.76	0.057	0.063	6/7/2004
TX1975	0.762	0.741	0.728	0.102	0.063	6/8/2004
TX2174	0.787	0.665	0.676	0.055	0.063	6/29/2004
TX2519	0.788	0.503	0.466	0.079	0.063	7/22/2004
TX1033	0.776	0.647	0.625	0.043	0.063	8/26/2004
TX2202	0.793	0.712	0.707	0.037	0.063	9/9/2004
TX1100	0.778	0.632	0.523	0.062	0.063	9/9/2004
TX1154	0.783	0.737	0.741	0.063	0.063	9/20/2004
TX1319	0.78	0.728	0.72	0.099	0.063	9/23/2004
TX1674	0.788	0.675	0.634	0.112	0.063	9/23/2004
TX714	0.778	0.704	0.695	0.108	0.063	10/7/2004
TX1131	0.784	0.716	0.704	0.07	0.063	10/8/2004
TX210	0.732	0.657	0.706	0.14	0.064	11/14/2003
TX211	0.793	0.757	0.728	0.202	0.064	11/18/2003
TX321	0.725	0.638	0.668	0.086	0.064	1/7/2004
TX390	0.767	0.702	0.675	0.093	0.064	1/8/2004
TX724	0.744	0.716	0.705	0.112	0.064	1/22/2004
TX1540	0.75	0.729	0.713	0.117	0.064	3/25/2004
TX1748	0.704	0.515	0.558	0.082	0.064	5/10/2004
TX1861	0.767	0.74	0.737	0.067	0.064	5/18/2004
TX1987	0.784	0.741	0.732	0.099	0.064	6/8/2004
TX2089	0.75	0.716	0.719	0.194	0.064	6/22/2004
TX2119	0.786	0.697	0.707	0.181	0.064	6/23/2004
TX2124	0.745	0.625	0.575	0.059	0.064	6/23/2004
TX2140	0.78	0.696	0.677	0.11	0.064	6/24/2004
TX2382	0.771	0.697	0.68	0.081	0.064	7/13/2004
TX2446	0.752	0.682	0.701	0.044	0.064	7/15/2004
TX162	0.777	0.67	0.654	0.082	0.064	7/22/2004
TX600	0.794	0.716	0.703	0.263	0.064	7/22/2004
TX1507	0.76	0.671	0.668	0.078	0.064	7/22/2004
TX1819	0.788	0.72	0.738	0.306	0.064	7/27/2004
TX1605	0.769	0.726	0.726	0.07	0.064	7/27/2004
TX989	0.792	0.697	0.636	0.223	0.064	8/24/2004
TX1001	0.787	0.692	0.694	0.049	0.064	8/26/2004
TX1025	0.785	0.431	0.436	0.11	0.064	8/26/2004
TX1199	0.782	0.716	0.692	0.145	0.064	9/23/2004
TX1364	0.774	0.671	0.611	0.227	0.064	10/19/2004
TX1323	0.77	0.718	0.682	0.072	0.064	10/21/2004
TX1385	0.778	0.663	0.58	0.225	0.064	10/26/2004
TX1389	0.784	0.688	0.681	0.166	0.064	10/28/2004
TX1426	0.762	0.634	0.619	0.138	0.064	10/28/2004
TX133	0.472	0.469	0.508	0.09	0.065	11/11/2003
TX296	0.756	0.47	0.431	0.045	0.065	1/6/2004
TX347	0.77	0.675	0.647	0.124	0.065	1/8/2004

TX641	0.766	0.746	0.744	0.068	0.065	1/13/2004
TX698	0.774	0.656	0.66	0.138	0.065	1/22/2004
TX1232	0.751	0.662	0.627	0.105	0.065	1/28/2004
TX1379	0.777	0.715	0.702	0.111	0.065	2/4/2004
TX1490	0.758	0.723	0.714	0.112	0.065	3/1/2004
TX1603	0.69	0.711	0.724	0.124	0.065	3/12/2004
TX1750	0.773	0.704	0.637	0.078	0.065	5/12/2004
TX1760	0.727	0.711	0.719	0.078	0.065	5/12/2004
TX1799	0.742	0.744	0.725	0.082	0.065	5/14/2004
TX1827	0.679	0.641	0.661	0.096	0.065	5/17/2004
TX1907	0.784	0.71	0.692	0.081	0.065	5/19/2004
TX1957	0.777	0.712	0.669	0.047	0.065	6/7/2004
TX1974	0.768	0.735	0.73	0.161	0.065	6/8/2004
TX2115	0.775	0.699	0.714	0.146	0.065	6/23/2004
TX2236	0.794	0.718	0.723	0.08	0.065	7/1/2004
TX2252	0.785	0.763	0.745	0.125	0.065	7/1/2004
TX2361	0.799	0.731	0.716	0.091	0.065	7/13/2004
TX2459	0.797	0.743	0.758	0.085	0.065	7/20/2004
TX2468	0.784	0.744	0.725	0.126	0.065	7/20/2004
TX2478	0.796	0.736	0.699	0.093	0.065	7/20/2004
TX2507	0.784	0.7	0.707	0.152	0.065	7/22/2004
TX940	0.792	0.713	0.699	0.156	0.065	8/24/2004
TX2198	0.79	0.595	0.467	0.095	0.065	9/9/2004
TX140	0.752	0.588	0.414	0.095	0.066	11/10/2003
TX144	0.745	0.701	0.718	0.072	0.066	11/11/2003
TX313	0.735	0.547	0.483	0.134	0.066	1/7/2004
TX1495	0.772	0.731	0.732	0.12	0.066	3/4/2004
TX1543	0.741	0.704	0.699	0.18	0.066	3/25/2004
TX1779	0.771	0.663	0.607	0.089	0.066	5/12/2004
TX1853	0.669	0.283	0.181	0.058	0.066	5/17/2004
TX1867	0.756	0.72	0.72	0.085	0.066	5/18/2004
TX2075	0.782	0.721	0.676	0.161	0.066	6/18/2004
TX2216	0.782	0.725	0.733	0.137	0.066	7/1/2004
TX2281	0.787	0.728	0.724	0.13	0.066	7/7/2004
TX2299	0.773	0.587	0.614	0.074	0.066	7/7/2004
TX2305	0.787	0.745	0.725	0.049	0.066	7/7/2004
TX2399	0.788	0.658	0.663	0.085	0.066	7/14/2004
TX1828	0.772	0.744	0.732	0.281	0.066	7/28/2004
TX801	0.787	0.711	0.712	0.088	0.066	8/4/2004
TX2199	0.8	0.653	0.481	0.108	0.066	9/9/2004
TX1228	0.772	0.627	0.552	0.183	0.066	9/30/2004
TX1130	0.787	0.711	0.718	0.063	0.066	10/8/2004
TX52	0.779	0.715	0.7	0.08	0.066	10/8/2004
TX1355	0.756	0.699	0.693	0.102	0.066	10/19/2004
TX96	0.782	0.65	0.695	0.406	0.067	11/6/2003
TX1584	0.657	0.665	0.695	0.081	0.067	3/12/2004
TX1509	0.65	0.687	0.688	0.11	0.067	3/18/2004
TX1945	0.776	0.69	0.722	0.076	0.067	6/7/2004
TX2041	0.792	0.744	0.727	0.03	0.067	6/10/2004
TX2087	0.775	0.739	0.689	0.091	0.067	6/22/2004
TX2274	0.796	0.72	0.722	0.198	0.067	7/1/2004

TX2383	0.776	0.709	0.693	0.099	0.067	7/13/2004
TX2425	0.789	0.673	0.707	0.279	0.067	7/15/2004
TX2426	0.78	0.714	0.721	0.114	0.067	7/15/2004
TX856	0.767	0.573	0.622	0.219	0.067	8/18/2004
TX997	0.785	0.557	0.447	0.164	0.067	8/24/2004
TX1053	0.794	0.727	0.704	0.112	0.067	9/2/2004
TX1219	0.767	0.735	0.717	0.115	0.067	9/30/2004
TX76	0.784	0.761	0.677	0.159	0.068	11/6/2003
TX221	0.747	0.706	0.719	0.067	0.068	11/14/2003
TX465	0.772	0.58	0.571	0.059	0.068	1/9/2004
TX1565	0.765	0.749	0.754	0.269	0.068	3/29/2004
TX1781	0.738	0.681	0.681	0.103	0.068	5/12/2004
TX1887	0.773	0.737	0.717	0.082	0.068	5/19/2004
TX1988	0.77	0.67	0.637	0.094	0.068	6/8/2004
TX2258	0.782	0.717	0.699	0.077	0.068	7/1/2004
TX2250	0.78	0.623	0.599	0.147	0.068	7/8/2004
TX2376	0.784	0.738	0.717	0.059	0.068	7/13/2004
TX1245	0.777	0.429	0.256	0.052	0.068	7/22/2004
TX743	0.777	0.736	0.702	0.068	0.068	8/3/2004
TX865	0.766	0.713	0.694	0.046	0.068	8/18/2004
TX959	0.786	0.692	0.69	0.099	0.068	8/24/2004
TX1066	0.778	0.648	0.599	0.093	0.068	9/2/2004
TX1267	0.786	0.711	0.695	0.103	0.068	10/1/2004
TX713	0.778	0.656	0.578	0.084	0.068	10/8/2004
TX1307	0.76	0.722	0.714	0.068	0.068	10/14/2004
TX1121	0.781	0.726	0.725	0.11	0.068	10/14/2004
TX1110	0.785	0.678	0.572	0.086	0.068	10/14/2004
TX1412	0.777	0.74	0.74	0.073	0.068	10/26/2004
TX1438	0.792	0.728	0.727	0.116	0.068	10/28/2004
TX5	0.772	0.665	0.598	0.101	0.069	11/4/2003
TX62	0.79	No Data	0.651	0.052	0.069	11/6/2003
TX1475	0.731	0.71	0.715	0.084	0.069	3/1/2004
TX1855	0.747	0.717	0.733	0.064	0.069	3/18/2004
TX1519	0.728	0.702	0.682	0.133	0.069	3/25/2004
TX1602	0.724	0.703	0.698	0.107	0.069	4/14/2004
TX1883	0.755	0.705	0.716	0.12	0.069	5/18/2004
TX2155	0.769	0.721	0.689	0.09	0.069	6/29/2004
TX2214	0.788	0.736	0.717	0.054	0.069	7/1/2004
TX2235	0.781	0.675	0.622	0.074	0.069	7/1/2004
TX2308	0.784	0.725	0.715	0.127	0.069	7/7/2004
TX2436	0.779	0.762	0.749	0.188	0.069	7/15/2004
TX693	0.776	0.542	0.393	0.111	0.069	7/22/2004
TX853	0.777	0.732	0.675	0.101	0.069	8/18/2004
TX1003	0.787	0.725	0.734	0.179	0.069	8/26/2004
TX2259	0.78	0.736	0.731	0.127	0.069	9/9/2004
TX1179	0.784	0.737	0.711	0.151	0.069	9/21/2004
TX154	0.78	0.677	0.63	0.079	0.069	9/21/2004
TX65	0.792	0.681	0.554	0.059	0.07	11/6/2003
TX126	0.764	0.728	0.725	0.118	0.07	11/10/2003
TX213	0.68	0.707	0.692	0.104	0.07	11/13/2003
TX1716	0.748	0.688	0.697	0.119	0.07	3/17/2004

TX1888	0.752	0.714	0.721	0.066	0.07	5/19/2004
TX1961	0.783	0.672	0.639	0.141	0.07	6/7/2004
TX2020	0.785	0.751	0.744	0.11	0.07	6/10/2004
TX2505	0.784	0.747	0.73	0.099	0.07	7/20/2004
TX1904	0.772	0.737	0.74	0.075	0.07	7/28/2004
TX1039	0.769	0.711	0.659	0.107	0.07	8/26/2004
TX1317	0.78	0.714	0.695	0.091	0.07	10/21/2004
TX148	0.744	0.678	0.705	0.058	0.071	11/10/2003
TX1537	0.765	0.7	0.682	0.065	0.071	3/4/2004
TX1715	0.73	0.702	0.675	0.104	0.071	3/17/2004
TX1854	0.747	0.725	0.713	0.1	0.071	3/18/2004
TX1708	0.719	0.686	0.714	0.072	0.071	5/10/2004
TX1717	0.743	0.714	0.717	0.262	0.071	5/10/2004
TX1862	0.742	0.709	0.695	0.074	0.071	5/18/2004
TX2022	0.781	0.748	0.743	0.072	0.071	6/10/2004
TX2110	0.786	0.753	0.746	0.165	0.071	6/23/2004
TX1763	0.782	0.769	0.762	0.081	0.071	7/27/2004
TX1984	0.788	0.693	0.727	0.07	0.071	7/28/2004
TX803	0.778	0.712	0.689	0.094	0.071	8/4/2004
TX1097	0.786	0.442	0.318	0.063	0.071	9/9/2004
TX1390	0.796	0.728	0.721	0.119	0.071	10/26/2004
TX1425	0.779	0.685	0.666	0.132	0.071	10/28/2004
TX75	0.792	0.724	0.644	0.142	0.072	11/6/2003
TX331	0.771	0.739	0.733	0.074	0.072	1/7/2004
TX485	0.762	0.598	0.581	0.075	0.072	1/9/2004
TX699	0.76	0.703	0.723	0.345	0.072	1/22/2004
TX1823	0.724	0.703	0.691	0.108	0.072	3/17/2004
TX1557	0.771	0.737	0.737	0.091	0.072	3/29/2004
TX1590	0.734	0.709	0.692	0.106	0.072	4/14/2004
TX2134	0.746	0.705	0.681	0.151	0.072	6/24/2004
TX2394	0.79	0.746	0.714	0.076	0.072	7/14/2004
TX2223	0.784	0.739	0.747	0.077	0.072	7/29/2004
TX1028	0.782	0.65	0.658	0.099	0.072	8/26/2004
TX1157	0.772	0.73	0.714	0.094	0.072	9/20/2004
TX1454	0.785	0.706	0.682	0.182	0.072	9/23/2004
TX114	0.789	0.741	0.732	0.266	0.072	10/8/2004
TX1138	0.798	0.724	0.725	0.121	0.072	10/8/2004
TX1106	0.779	0.722	0.716	0.103	0.072	10/14/2004
TX1356	0.767	0.729	0.728	0.069	0.072	10/19/2004
TX227	0.716	0.687	0.626	0.096	0.073	11/13/2003
TX209	0.728	0.658	0.617	0.246	0.073	11/14/2003
TX278	0.725	0.624	0.674	0.124	0.073	1/6/2004
TX1580	0.785	0.761	0.747	0.14	0.073	3/29/2004
TX1866	0.742	0.719	0.705	0.117	0.073	5/18/2004
TX2156	0.776	0.691	0.662	0.113	0.073	6/29/2004
TX2176	0.789	0.746	0.712	0.061	0.073	6/29/2004
TX2417	0.78	0.714	0.706	0.049	0.073	7/15/2004
TX2433	0.792	0.761	0.759	0.128	0.073	7/15/2004
TX1916	0.775	0.713	0.693	0.165	0.073	7/28/2004
TX756	0.787	0.691	0.635	0.123	0.073	8/3/2004
TX873	0.78	0.731	0.712	0.068	0.073	8/18/2004

TX878	0.783	0.722	0.701	0.107	0.073	8/18/2004
TX1432	0.778	0.693	0.674	0.174	0.073	10/28/2004
TX1644	0.779	0.73	0.7	0.167	0.074	4/26/2004
TX1790	0.723	0.688	0.697	0.103	0.074	5/14/2004
TX1898	0.746	0.737	0.742	0.15	0.074	5/19/2004
TX2197	0.801	0.76	0.753	0.096	0.074	6/30/2004
TX2389	0.801	0.754	0.741	0.154	0.074	7/14/2004
TX2435	0.774	0.746	0.768	0.07	0.074	7/15/2004
TX1460	0.787	0.741	0.737	0.085	0.074	7/22/2004
TX907	0.76	0.717	0.721	0.083	0.074	8/24/2004
TX1211	0.774	0.701	0.627	0.13	0.074	9/30/2004
TX1251	0.774	0.692	0.663	0.091	0.074	9/30/2004
TX1361	0.767	0.694	0.683	0.07	0.074	10/19/2004
TX1380	0.778	0.693	0.68	0.232	0.074	10/26/2004
TX97	0.776	0.733	0.693	0.068	0.075	11/6/2003
TX466	0.737	0.665	0.702	0.108	0.075	1/9/2004
TX1281	0.753	0.733	0.723	0.301	0.075	1/29/2004
TX1571	0.767	0.735	0.747	0.109	0.075	3/29/2004
TX2449	0.789	0.733	0.729	0.067	0.075	7/20/2004
TX2461	0.785	0.683	0.696	0.101	0.075	7/20/2004
TX785	0.792	0.75	0.742	0.115	0.075	8/4/2004
TX1177	0.766	0.711	0.698	0.046	0.075	9/21/2004
TX1440	0.781	0.649	0.633	0.21	0.075	10/28/2004
TX160	0.692	0.623	0.632	0.033	0.076	11/11/2003
TX215	0.742	0.655	0.656	0.128	0.076	11/13/2003
TX108	0.703	0.687	0.68	0.183	0.076	12/2/2003
TX1462	0.761	0.717	0.685	0.204	0.076	2/4/2004
TX1607	0.75	0.695	0.692	0.144	0.076	4/14/2004
TX1608	0.734	0.682	0.701	0.133	0.076	4/14/2004
TX1653	0.752	0.685	0.675	0.091	0.076	4/29/2004
TX2000	0.778	0.699	0.64	0.07	0.076	6/8/2004
TX2148	0.751	0.696	0.678	0.053	0.076	6/29/2004
TX2423	0.78	0.693	0.666	0.101	0.076	7/15/2004
TX2455	0.782	0.751	0.757	0.071	0.076	7/20/2004
TX2469	0.757	0.011	0.664	0.306	0.076	7/20/2004
TX933	0.764	0.677	0.648	0.042	0.076	8/24/2004
TX1297	0.763	0.705	0.689	0.086	0.076	9/21/2004
TX1300	0.769	0.703	0.695	0.017	0.076	10/14/2004
TX115	0.776	0.737	0.732	0.184	0.077	11/10/2003
TX707	0.738	0.674	0.686	0.23	0.077	1/22/2004
TX1236	0.721	0.644	0.645	0.052	0.077	1/28/2004
TX1447	0.766	0.705	0.721	0.129	0.077	2/4/2004
TX1931	0.737	0.732	0.729	0.099	0.077	3/18/2004
TX1830	0.7	0.679	0.657	0.115	0.077	5/17/2004
TX1953	0.781	0.734	0.745	0.077	0.077	6/7/2004
TX2102	0.77	0.709	0.682	0.356	0.077	6/22/2004
TX2272	0.771	0.676	0.655	0.168	0.077	7/1/2004
TX2286	0.796	0.758	0.746	0.084	0.077	7/7/2004
TX2422	0.793	0.708	0.682	0.139	0.077	7/15/2004
TX2464	0.766	0.725	0.717	0.074	0.077	7/20/2004
TX136	0.788	0.659	0.57	0.169	0.077	7/22/2004

TX895	0.789	0.734	0.742	0.146	0.077	8/24/2004
TX1714	0.758	0.674	0.679	0.081	0.077	10/7/2004
TX1127	0.753	0.72	0.712	0.24	0.077	10/14/2004
TX67	0.795	No Data	0.538	0.028	0.078	11/6/2003
TX332	0.711	0.681	0.633	0.096	0.078	1/7/2004
TX1458	0.769	0.739	0.732	0.132	0.078	2/4/2004
TX1461	0.747	0.727	0.741	0.151	0.078	2/4/2004
TX1474	0.748	0.712	0.722	0.075	0.078	3/1/2004
TX1617	0.728	0.74	0.731	0.181	0.078	3/12/2004
TX1642	0.786	0.721	0.726	0.33	0.078	4/26/2004
TX1833	0.674	0.672	0.679	0.117	0.078	5/17/2004
TX2434	0.798	0.744	0.738	0.074	0.078	7/15/2004
TX1008	0.779	0.711	0.69	0.112	0.078	8/26/2004
TX1055	0.792	0.67	0.643	0.148	0.078	9/2/2004
TX1194	0.797	0.722	0.732	0.125	0.078	9/23/2004
TX1372	0.767	0.641	0.637	0.099	0.078	10/19/2004
TX1414	0.773	0.711	0.705	0.057	0.078	10/26/2004
TX205	0.75	0.719	0.72	0.111	0.079	11/13/2003
TX649	0.771	0.713	0.708	0.101	0.079	1/13/2004
TX1489	0.718	0.589	0.612	0.091	0.079	3/1/2004
TX1594	0.722	0.699	0.729	0.248	0.079	4/14/2004
TX1597	0.705	0.688	0.694	0.1	0.079	4/14/2004
TX1718	0.759	0.716	0.727	0.157	0.079	5/10/2004
TX1896	0.762	0.734	0.718	0.092	0.079	5/19/2004
TX1963	0.723	0.716	0.707	0.113	0.079	6/7/2004
TX2473	0.782	0.742	0.738	0.133	0.079	7/20/2004
TX2465	0.784	0.746	0.741	0.046	0.079	7/20/2004
TX1689	0.773	0.732	0.712	0.098	0.079	7/27/2004
TX1291	0.787	0.71	0.701	0.059	0.079	10/14/2004
TX1383	0.772	0.681	0.627	0.101	0.079	10/26/2004
TX1241	0.771	0.721	0.724	0.244	0.08	1/28/2004
TX1476	0.746	0.732	0.738	0.126	0.08	3/1/2004
TX1809	0.76	0.716	0.715	0.084	0.08	5/14/2004
TX1847	0.723	0.701	0.664	0.258	0.08	5/17/2004
TX2114	0.784	0.717	0.685	0.137	0.08	6/23/2004
TX2123	0.786	0.741	0.726	0.256	0.08	6/23/2004
TX2453	0.785	0.755	0.756	0.104	0.08	7/20/2004
TX2463	0.786	0.764	0.749	0.121	0.08	7/20/2004
TX1500	0.767	0.731	0.691	0.072	0.08	7/22/2004
TX762	0.762	0.741	0.71	0.128	0.08	8/3/2004
TX1723	0.791	0.733	0.694	0.078	0.08	9/9/2004
TX1163	0.774	0.707	0.664	0.091	0.08	9/20/2004
TX10	0.78	0.73	0.703	0.064	0.081	11/6/2003
TX1610	0.763	0.735	0.732	0.153	0.081	4/14/2004
TX1659	0.767	0.731	0.735	0.33	0.081	4/29/2004
TX1870	0.733	0.684	0.677	0.105	0.081	5/18/2004
TX1885	0.767	0.73	0.622	0.091	0.081	5/18/2004
TX2126	0.758	0.638	0.58	0.096	0.081	6/23/2004
TX2273	0.771	0.678	0.658	0.24	0.081	7/1/2004
TX1483	0.765	0.712	0.7	0.073	0.081	7/22/2004
TX1041	0.791	0.656	0.678	0.341	0.081	8/26/2004

TX1150	0.793	0.639	0.624	0.057	0.081	9/20/2004
TX1129	0.785	0.666	0.648	0.146	0.081	10/8/2004
TX1311	0.796	0.724	0.687	0.112	0.081	10/21/2004
TX681	0.717	0.691	0.656	0.123	0.082	1/20/2004
TX90	0.776	0.729	0.725	0.253	0.082	1/28/2004
TX1463	0.742	0.704	0.729	0.125	0.082	2/4/2004
TX1479	0.737	0.71	0.699	0.197	0.082	3/1/2004
TX1647	0.786	0.758	0.73	0.082	0.082	4/26/2004
TX2052	0.756	0.741	0.717	0.036	0.082	6/10/2004
TX2160	0.761	0.626	0.681	0.127	0.082	6/29/2004
TX122	0.779	0.723	0.723	0.092	0.082	9/21/2004
TX1891	0.789	0.668	0.603	0.112	0.082	10/7/2004
TX1204	0.76	0.675	0.663	0.118	0.082	10/14/2004
TX1422	0.778	0.549	0.558	0.161	0.082	10/28/2004
TX346	0.784	0.494	0.309	0.117	0.083	1/8/2004
TX1523	0.758	0.736	0.729	0.197	0.083	3/4/2004
TX1529	0.755	0.691	0.699	0.106	0.083	3/4/2004
TX1807	0.745	0.715	0.708	0.102	0.083	3/17/2004
TX1912	0.77	0.669	0.622	0.12	0.083	5/19/2004
TX2157	0.772	0.66	0.611	0.119	0.083	6/29/2004
TX2172	0.786	0.763	0.752	0.349	0.083	6/29/2004
TX2311	0.776	0.724	0.708	0.206	0.083	7/7/2004
TX766	0.784	0.695	0.678	0.113	0.083	8/3/2004
TX775	0.792	0.731	0.729	0.1	0.083	8/3/2004
TX152	0.77	0.713	0.696	0.079	0.083	9/21/2004
TX1128	0.762	0.709	0.711	0.061	0.083	10/14/2004
TX1369	0.78	0.712	0.685	0.123	0.083	10/19/2004
TX1416	0.765	0.727	0.731	0.121	0.083	10/26/2004
TX720	0.749	0.728	0.73	0.104	0.084	1/22/2004
TX1609	0.778	0.727	0.698	0.164	0.084	4/14/2004
TX1666	0.744	0.698	0.701	0.072	0.084	4/29/2004
TX1838	0.66	0.684	0.695	0.171	0.084	5/17/2004
TX1899	0.78	0.737	0.733	0.139	0.084	5/19/2004
TX1999	0.767	0.688	0.676	0.074	0.084	6/8/2004
TX2008	0.769	0.643	0.623	0.12	0.084	6/9/2004
TX2335	0.778	0.572	0.568	0.184	0.084	7/8/2004
TX2439	0.799	0.711	0.722	0.047	0.084	7/15/2004
TX1229	0.771	0.693	0.658	0.148	0.084	9/21/2004
TX1246	0.794	0.715	0.669	0.128	0.084	9/30/2004
TX1117	0.763	0.565	0.485	0.198	0.084	10/14/2004
TX1439	0.783	0.704	0.686	0.075	0.084	10/28/2004
TX61	0.785	0.726	0.664	0.083	0.085	11/6/2003
TX121	0.665	0.666	0.668	0.124	0.085	11/11/2003
TX1438	0.76	0.73	0.718	0.102	0.085	2/4/2004
TX1615	0.699	0.71	0.722	0.096	0.085	3/12/2004
TX2169	0.785	0.749	0.739	0.064	0.085	6/29/2004
TX2228	0.783	0.713	0.698	0.086	0.085	7/1/2004
TX847	0.789	0.676	0.619	0.121	0.085	8/18/2004
TX372	0.784	0.682	0.641	0.119	0.085	10/7/2004
TX1288	0.774	0.652	0.683	0.105	0.085	10/14/2004
TX635	0.778	0.726	0.721	0.06	0.086	1/13/2004

TX1388	0.769	0.684	0.682	0.113	0.086	2/4/2004
TX1569	0.768	0.64	0.619	0.099	0.086	3/4/2004
TX1510	0.72	0.666	0.664	0.118	0.086	3/18/2004
TX1822	0.73	0.68	0.681	0.051	0.086	5/17/2004
TX1967	0.781	0.716	0.707	0.177	0.086	6/7/2004
TX2180	0.775	0.705	0.698	0.092	0.086	6/29/2004
TX2452	0.793	0.74	0.732	0.101	0.086	7/20/2004
TX2289	0.777	0.655	0.631	0.101	0.086	7/28/2004
TX228	0.79	0.704	0.694	0.091	0.087	11/13/2003
TX197	0.715	0.694	0.702	0.19	0.087	11/14/2003
TX235	0.783	0.756	0.757	0.269	0.087	11/18/2003
TX1815	0.702	0.657	0.643	0.099	0.087	5/14/2004
TX1876	0.724	0.684	0.705	0.096	0.087	5/18/2004
TX2037	0.775	0.737	0.725	0.085	0.087	6/10/2004
TX2307	0.774	0.708	0.695	0.115	0.087	7/7/2004
TX2321	0.789	0.723	0.685	0.234	0.087	7/7/2004
TX2489	0.788	0.73	0.723	0.235	0.087	7/20/2004
TX1965	0.793	0.747	0.748	0.117	0.087	9/23/2004
TX1192	0.779	0.708	0.708	0.088	0.087	9/23/2004
TX1340	0.766	0.65	0.564	0.12	0.087	10/21/2004
TX303	0.711	0.259	0.276	0.07	0.088	1/6/2004
TX323	0.73	0.665	0.621	0.115	0.088	1/7/2004
TX697	0.758	0.641	0.555	0.141	0.088	1/22/2004
TX1857	0.739	0.715	0.712	0.162	0.088	3/18/2004
TX1627	0.786	0.735	0.719	0.188	0.088	4/26/2004
TX1968	0.797	0.753	0.703	0.359	0.088	6/7/2004
TX2487	0.797	0.744	0.755	0.16	0.088	7/20/2004
TX1253	0.793	0.625	0.654	0.228	0.088	7/22/2004
TX874	0.778	0.734	0.724	0.06	0.088	8/18/2004
TX1105	0.775	0.604	0.454	0.179	0.088	10/14/2004
TX1687	0.529	0.656	0.692	0.161	0.089	3/12/2004
TX2219	0.784	0.754	0.743	0.124	0.089	7/1/2004
TX2248	0.784	0.753	0.74	0.041	0.089	7/1/2004
TX2485	0.776	0.756	0.748	0.042	0.089	7/20/2004
TX1134	0.788	0.687	0.58	0.147	0.089	8/18/2004
TX1122	0.789	0.714	0.711	0.09	0.089	10/14/2004
TX1816	0.78	0.735	0.731	0.148	0.09	5/14/2004
TX2076	0.787	0.747	0.658	0.389	0.09	6/18/2004
TX2380	0.795	0.723	0.698	0.151	0.09	7/13/2004
TX2386	0.784	0.729	0.727	0.264	0.09	7/13/2004
TX2429	0.79	0.725	0.715	0.051	0.09	7/15/2004
TX2440	0.788	0.744	0.739	0.078	0.09	7/15/2004
TX1901	0.777	0.714	0.712	0.126	0.09	7/28/2004
TX1168	0.724	0.619	0.583	0.103	0.09	9/20/2004
TX1196	0.771	0.716	0.717	0.093	0.09	9/23/2004
TX172	0.7	0.706	0.717	0.212	0.091	11/11/2003
TX397	0.777	0.692	0.662	0.106	0.091	1/8/2004
TX409	0.78	0.729	0.705	0.141	0.091	1/8/2004
TX1485	0.754	0.717	0.697	0.178	0.091	3/1/2004
TX2085	0.757	0.715	0.743	0.419	0.091	6/22/2004
TX2303	0.744	0.688	0.701	0.07	0.091	7/7/2004

TX751	0.787	0.745	0.733	0.106	0.091	8/3/2004
TX776	0.789	0.627	0.509	0.141	0.091	8/3/2004
TX1873	0.791	0.679	0.625	0.241	0.091	9/9/2004
TX1086	0.788	0.692	0.642	0.159	0.091	9/9/2004
TX668	0.789	0.738	0.718	0.151	0.091	10/7/2004
TX1303	0.764	0.717	0.708	0.119	0.091	10/14/2004
TX1344	0.772	0.643	0.526	0.106	0.091	10/21/2004
TX1454	0.76	0.72	0.69	0.162	0.092	2/4/2004
TX1959	0.765	0.681	0.651	0.049	0.092	6/7/2004
TX1973	0.777	0.728	0.716	0.096	0.092	6/8/2004
TX1992	0.758	0.701	0.687	0.124	0.092	7/29/2004
TX1235	0.785	0.687	0.698	0.179	0.092	9/30/2004
TX1298	0.762	0.645	0.678	0.024	0.092	10/14/2004
TX179	0.742	0.708	0.71	0.214	0.093	11/13/2003
TX464	0.777	0.724	0.715	0.078	0.093	1/9/2004
TX1564	0.759	0.733	0.738	0.217	0.093	3/29/2004
TX1797	0.713	0.711	0.706	0.113	0.093	5/14/2004
TX2086	0.787	0.728	0.725	0.146	0.093	6/22/2004
TX2183	0.787	0.687	0.623	0.182	0.093	6/29/2004
TX2192	0.779	0.736	0.723	0.087	0.093	6/30/2004
TX2323	0.759	0.7	0.709	0.079	0.093	7/14/2004
TX2430	0.782	0.724	0.736	0.083	0.093	7/15/2004
TX782	0.796	0.711	0.704	0.195	0.093	8/3/2004
TX807	0.776	0.656	0.58	0.101	0.093	8/4/2004
TX289	0.749	0.634	0.63	0.072	0.094	1/6/2004
TX1766	0.732	0.713	0.703	0.096	0.094	3/17/2004
TX1624	0.768	0.724	0.709	0.114	0.094	4/26/2004
TX1641	0.776	0.708	0.688	0.248	0.094	4/26/2004
TX1841	0.655	0.67	0.683	0.149	0.094	5/17/2004
TX2370	0.798	0.738	0.735	0.427	0.094	7/13/2004
TX741	0.786	0.734	0.726	0.11	0.094	8/3/2004
TX1115	0.783	0.593	0.429	0.089	0.094	10/14/2004
TX475	0.736	0.005	0.703	0.064	0.095	1/9/2004
TX1935	0.749	0.679	0.668	0.22	0.095	3/18/2004
TX2220	0.78	0.725	0.741	0.224	0.095	7/1/2004
TX2222	0.799	0.753	0.769	0.139	0.095	7/1/2004
TX2265	0.792	0.742	0.739	0.194	0.095	7/1/2004
TX764	0.785	0.73	0.711	0.121	0.095	8/3/2004
TX1167	0.784	0.604	0.545	0.095	0.095	9/20/2004
TX251	0.605	0.678	0.691	0.32	0.096	11/21/2003
TX1690	0.723	0.684	0.695	0.179	0.096	5/10/2004
TX1789	0.761	0.667	0.675	0.121	0.096	5/12/2004
TX1983	0.772	0.725	0.716	0.066	0.096	6/8/2004
TX2207	0.765	0.664	0.653	0.148	0.096	6/30/2004
TX2212	0.79	0.714	0.679	0.183	0.096	6/30/2004
TX2506	0.752	0.694	0.707	0.026	0.096	7/20/2004
TX2260	0.781	0.727	0.717	0.084	0.096	9/9/2004
TX1191	0.791	0.725	0.717	0.162	0.096	9/23/2004
TX1256	0.744	0.653	0.627	0.407	0.096	9/30/2004
TX1373	0.759	0.639	0.57	0.093	0.096	10/19/2004
TX1343	0.776	0.69	0.654	0.106	0.096	10/21/2004

TX87	0.789	0.732	0.709	0.1	0.097	11/6/2003
TX344	0.779	0.703	0.726	0.127	0.097	1/8/2004
TX620	0.742	0.692	0.685	0.183	0.097	1/13/2004
TX1464	0.747	0.696	0.678	0.197	0.097	2/4/2004
TX1501	0.768	0.675	0.704	0.075	0.097	3/4/2004
TX2468	0.778	0.755	0.75	0.108	0.097	7/20/2004
TX1818	0.799	0.778	0.777	0.189	0.097	7/27/2004
TX881	0.788	0.742	0.71	0.21	0.097	8/18/2004
TX1338	0.77	0.707	0.735	0.118	0.098	1/29/2004
TX2045	0.775	0.697	0.701	0.042	0.098	6/10/2004
TX2415	0.788	0.759	0.749	0.058	0.098	7/15/2004
TX1156	0.744	0.7	0.7	0.094	0.098	9/20/2004
TX1367	0.772	0.689	0.688	0.146	0.098	10/19/2004
TX181	0.746	0.692	0.686	0.115	0.099	11/13/2003
TX277	0.746	0.636	0.671	0.148	0.099	1/6/2004
TX401	0.772	0.702	0.64	0.099	0.099	1/8/2004
TX482	0.752	0.705	0.677	0.071	0.099	1/9/2004
TX1292	0.757	0.71	0.723	0.189	0.099	1/29/2004
TX1911	0.769	0.704	0.719	0.087	0.099	5/19/2004
TX2205	0.78	0.644	0.652	0.069	0.099	6/30/2004
TX1334	0.77	0.647	0.522	0.126	0.099	10/21/2004
TX116	0.768	0.683	0.682	0.162	0.1	11/10/2003
TX1948	0.762	0.747	0.737	0.05	0.1	6/7/2004
TX2313	0.776	0.686	0.664	0.202	0.1	7/7/2004
TX1491	0.759	0.713	0.707	0.094	0.1	7/22/2004
TX1332	0.776	0.706	0.639	0.147	0.1	10/21/2004
TX254	0.769	0.665	0.648	0.171	0.101	11/18/2003
TX1575	0.764	0.732	0.74	0.107	0.101	3/29/2004
TX1872	0.776	0.748	0.713	0.107	0.101	5/18/2004
TX1950	0.786	0.75	0.748	0.09	0.101	6/7/2004
TX2450	0.789	0.715	0.718	0.1	0.101	7/20/2004
TX2457	0.785	0.763	0.755	0.056	0.101	7/20/2004
TX773	0.78	0.714	0.687	0.119	0.101	8/3/2004
TX1096	0.787	0.613	0.485	0.109	0.101	9/9/2004
TX1103	0.764	0.678	0.668	0.288	0.101	10/14/2004
TX1406	0.773	0.484	0.359	0.076	0.101	10/28/2004
TX1345	0.775	0.731	0.705	0.085	0.102	1/29/2004
TX1299	0.783	0.719	0.702	0.062	0.102	10/14/2004
TX1997	0.787	0.684	0.606	0.195	0.103	9/9/2004
TX163	0.768	0.688	0.695	0.117	0.104	11/10/2003
TX247	0.771	0.718	0.702	0.239	0.104	12/2/2003
TX1863	0.766	0.708	0.685	0.199	0.104	5/18/2004
TX1881	0.733	0.576	0.521	0.079	0.104	5/18/2004
TX2054	0.777	0.745	0.739	0.047	0.104	6/15/2004
TX2109	0.79	0.721	0.722	0.287	0.104	6/23/2004
TX2175	0.793	0.72	0.684	0.224	0.104	6/29/2004
TX760	0.782	0.731	0.704	0.104	0.104	8/3/2004
TX1084	0.788	0.706	0.643	0.345	0.104	9/9/2004
TX1112	0.782	0.688	0.592	0.145	0.104	10/14/2004
TX643	0.749	0.715	0.725	0.078	0.105	1/13/2004
TX1329	0.765	0.745	0.729	0.082	0.105	1/29/2004

TX1677	0.743	0.705	0.637	0.153	0.105	4/29/2004
TX1875	0.771	0.716	0.718	0.091	0.105	5/18/2004
TX2150	0.755	0.646	0.636	0.053	0.105	6/29/2004
TX1421	0.778	0.713	0.672	0.101	0.105	10/28/2004
TX251	0.786	0.752	0.76	0.333	0.106	11/18/2003
TX462	0.774	0.703	0.689	0.126	0.106	1/9/2004
TX2047	0.783	0.689	0.658	0.067	0.106	6/10/2004
TX2204	0.796	0.729	0.706	0.115	0.106	6/30/2004
TX1040	0.779	0.714	0.68	0.356	0.106	8/26/2004
TX257	0.781	0.729	0.718	0.176	0.107	11/18/2003
TX2030	0.792	0.679	0.677	0.129	0.107	6/15/2004
TX2477	0.796	0.744	0.732	0.098	0.107	7/20/2004
TX816	0.781	0.735	0.73	0.069	0.107	8/18/2004
TX852	0.792	0.734	0.721	0.076	0.107	8/18/2004
TX1050	0.773	0.694	0.693	0.083	0.107	9/2/2004
TX1675	0.71	0.653	0.66	0.177	0.108	4/29/2004
TX2427	0.786	0.652	0.664	0.046	0.108	7/15/2004
TX2515	0.791	0.68	0.707	0.096	0.108	7/22/2004
TX1143	0.793	0.756	0.725	0.186	0.108	10/8/2004
TX1472	0.742	0.712	0.725	0.171	0.109	3/1/2004
TX1765	0.742	0.708	0.695	0.11	0.109	5/12/2004
TX2224	0.783	0.745	0.761	0.043	0.109	7/1/2004
TX761	0.779	0.69	0.678	0.117	0.109	8/3/2004
TX1378	0.761	0.742	0.704	0.408	0.11	1/29/2004
TX1764	0.694	0.657	0.633	0.065	0.11	5/12/2004
TX2116	0.782	0.687	0.664	0.141	0.11	6/23/2004
TX2171	0.786	0.739	0.742	0.117	0.111	6/29/2004
TX1916	0.784	0.67	0.633	0.114	0.111	7/15/2004
TX996	0.784	0.736	0.708	0.331	0.111	8/24/2004
TX1353	0.758	0.714	0.727	0.071	0.111	10/19/2004
TX1366	0.752	0.754	0.736	0.326	0.112	1/29/2004
TX2304	0.778	0.701	0.667	0.281	0.112	7/7/2004
TX2378	0.793	0.748	0.737	0.16	0.112	7/13/2004
TX1180	0.779	0.727	0.705	0.177	0.112	9/21/2004
TX157	0.777	0.726	0.708	0.079	0.112	9/21/2004
TX125	0.739	0.66	0.658	0.094	0.113	11/10/2003
TX1239	0.757	0.644	0.675	0.195	0.113	1/28/2004
TX1914	0.756	0.434	0.313	0.174	0.113	5/19/2004
TX1427	0.789	0.696	0.692	0.104	0.113	10/28/2004
TX187	0.71	0.552	0.615	0.144	0.114	11/11/2003
TX297	0.726	0.591	0.593	0.091	0.114	1/6/2004
TX616	0.763	0.62	0.622	0.218	0.114	1/13/2004
TX1497	0.777	0.705	0.681	0.111	0.114	7/22/2004
TX1101	0.775	0.555	0.48	0.114	0.114	9/9/2004
TX151	0.767	0.641	0.659	0.108	0.115	11/10/2003
TX2203	0.794	0.745	0.724	0.125	0.115	6/30/2004
TX758	0.777	0.623	0.542	0.145	0.115	8/3/2004
TX804	0.783	0.743	0.72	0.119	0.115	8/4/2004
TX207	0.459	0.632	0.629	0.165	0.116	11/14/2003
TX371	0.78	0.699	0.691	0.185	0.116	1/8/2004
TX1362	0.782	0.718	0.731	0.123	0.116	10/19/2004

TX149	0.759	0.687	0.701	0.095	0.117	11/10/2003
TX2062	0.789	0.71	0.671	0.148	0.117	6/15/2004
TX2365	0.785	0.692	0.633	0.209	0.117	7/13/2004
TX2229	0.792	0.733	0.731	0.126	0.117	9/9/2004
TX1352	0.782	0.695	0.715	0.117	0.117	10/19/2004
TX1694	0.666	0.67	0.671	0.318	0.118	5/10/2004
TX1879	0.745	0.653	0.614	0.253	0.118	5/18/2004
TX2221	0.791	0.738	0.751	0.141	0.118	7/1/2004
TX1511	0.778	0.751	0.721	0.467	0.118	7/22/2004
TX911	0.762	0.729	0.726	0.289	0.118	8/24/2004
TX1719	0.771	0.661	0.647	0.23	0.118	10/7/2004
TX1125	0.788	0.721	0.719	0.091	0.118	10/14/2004
TX1351	0.768	0.658	0.687	0.169	0.118	10/19/2004
TX129	0.756	0.566	0.451	0.15	0.119	11/10/2003
TX1528	0.746	0.689	0.701	0.174	0.119	3/4/2004
TX1547	0.723	0.725	0.72	0.24	0.119	3/25/2004
TX2234	0.789	0.65	0.627	0.128	0.119	7/1/2004
TX688	0.786	0.362	0.214	0.108	0.119	7/22/2004
TX755	0.776	0.704	0.687	0.164	0.12	8/3/2004
TX1118	0.787	0.723	0.687	0.266	0.12	10/14/2004
TX338	0.779	0.609	0.523	0.115	0.121	1/8/2004
TX622	0.767	0.654	0.681	0.219	0.121	1/13/2004
TX1795	0.731	0.709	0.703	0.153	0.121	5/14/2004
TX1056	0.778	0.731	0.708	0.138	0.121	9/2/2004
TX258	0.74	0.667	0.677	0.252	0.122	12/2/2003
TX650	0.739	0.685	0.681	0.134	0.122	1/20/2004
TX137	0.747	0.702	0.693	0.163	0.123	11/10/2003
TX256	0.781	0.726	0.729	0.315	0.123	11/18/2003
TX1448	0.744	0.701	0.671	0.158	0.123	2/4/2004
TX1337	0.781	0.682	0.62	0.112	0.123	10/21/2004
TX2117	0.789	0.744	0.745	0.144	0.124	6/23/2004
TX1971	0.805	0.761	0.751	0.37	0.125	6/8/2004
TX1290	0.779	0.715	0.696	0.091	0.125	10/14/2004
TX2432	0.791	0.705	0.71	0.054	0.126	7/15/2004
TX1197	0.776	0.681	0.641	0.113	0.127	9/23/2004
TX701	0.708	0.66	0.66	0.192	0.128	1/22/2004
TX1555	0.766	0.718	0.713	0.218	0.128	3/29/2004
TX2159	0.772	0.713	0.711	0.124	0.128	7/29/2004
TX325	0.757	0.7	0.678	0.165	0.129	1/7/2004
TX2118	0.783	0.739	0.734	0.232	0.129	6/23/2004
TX2191	0.773	0.715	0.711	0.075	0.129	6/30/2004
TX2232	0.792	0.7	0.642	0.273	0.129	7/1/2004
TX1391	0.767	0.676	0.654	0.144	0.129	10/26/2004
TX1401	0.776	0.674	0.676	0.097	0.129	10/28/2004
TX311	0.752	0.632	0.629	0.218	0.13	1/7/2004
TX88	0.758	0.533	0.464	0.138	0.131	11/7/2003
TX337	0.779	0.534	0.382	0.147	0.131	1/8/2004
TX2168	0.78	0.693	0.671	0.167	0.131	6/29/2004
TX2013	0.787	0.734	0.724	0.285	0.131	7/15/2004
TX778	0.767	0.671	0.54	0.129	0.131	8/3/2004
TX327	0.727	0.672	0.648	0.142	0.132	1/7/2004

TX2285	0.783	0.762	0.755	0.14	0.132	7/7/2004
TX2456	0.776	0.726	0.733	0.093	0.132	7/20/2004
TX70	0.789	0.627	0.554	0.143	0.133	11/7/2003
TX2165	0.786	0.699	0.676	0.118	0.133	6/29/2004
TX1169	0.783	0.638	0.538	0.191	0.133	9/20/2004
TX60	0.791	0.735	0.721	0.064	0.134	11/6/2003
TX1623	0.785	0.713	0.679	0.094	0.134	7/27/2004
TX1614	0.744	0.729	0.735	0.252	0.135	4/8/2004
TX2190	0.782	0.744	0.735	0.121	0.135	6/30/2004
TX249	0.414	0.55	0.579	0.351	0.136	12/2/2003
TX2431	0.779	0.724	0.718	0.107	0.136	7/15/2004
TX1375	0.775	0.664	0.653	0.263	0.136	10/26/2004
TX342	0.778	0.447	0.403	0.212	0.137	1/8/2004
TX2517	0.781	0.641	0.64	0.136	0.137	7/22/2004
TX1064	0.797	0.697	0.631	0.175	0.137	9/2/2004
TX706	0.785	0.591	0.499	0.228	0.137	10/7/2004
TX188	0.776	0.73	0.73	0.189	0.138	11/18/2003
TX461	0.774	0.693	0.637	0.23	0.138	1/8/2004
TX1848	0.795	0.765	0.764	0.143	0.139	7/28/2004
TX336	0.692	0.679	0.688	0.142	0.14	1/7/2004
TX1427	0.769	0.687	0.641	0.206	0.141	2/4/2004
TX2454	0.774	0.727	0.721	0.121	0.141	7/15/2004
TX2213	0.793	0.731	0.733	0.248	0.142	6/30/2004
TX2249	0.773	0.747	0.735	0.139	0.143	7/1/2004
TX1322	0.784	0.721	0.704	0.158	0.143	10/21/2004
TX2146	0.779	0.743	0.732	0.116	0.144	6/29/2004
TX2194	0.781	0.75	0.742	0.104	0.144	6/30/2004
TX259	0.585	0.596	0.588	0.405	0.145	12/2/2003
TX2167	0.792	0.715	0.702	0.229	0.145	6/29/2004
TX2230	0.782	0.714	0.713	0.114	0.145	7/1/2004
TX1046	0.788	0.709	0.696	0.142	0.145	9/2/2004
TX473	0.741	0.627	0.615	0.113	0.146	1/9/2004
TX1333	0.782	0.706	0.68	0.146	0.146	10/21/2004
TX281	0.717	0.667	0.676	0.388	0.147	1/6/2004
TX2170	0.78	0.693	0.702	0.149	0.147	6/29/2004
TX2287	0.787	0.728	0.697	0.157	0.147	7/7/2004
TX1285	0.777	0.604	0.54	0.118	0.147	10/14/2004
TX2028	0.761	0.725	0.718	0.14	0.148	6/10/2004
TX204	0.613	0.702	0.687	0.122	0.149	11/13/2003
TX2401	0.772	0.714	0.694	0.285	0.149	7/14/2004
TX2396	0.79	0.728	0.715	0.236	0.15	7/14/2004
TX1370	0.773	0.668	0.657	0.132	0.151	10/19/2004
TX1457	0.762	0.702	0.713	0.149	0.152	7/22/2004
TX2067	0.781	0.747	0.716	0.183	0.153	6/18/2004
TX2513	0.782	0.596	0.498	0.209	0.153	7/22/2004
TX2239	0.794	0.748	0.736	0.473	0.154	7/1/2004
TX2368	0.783	0.66	0.625	0.36	0.154	7/13/2004
TX2139	0.764	0.692	0.632	0.275	0.155	6/24/2004
TX2244	0.786	0.75	0.755	0.37	0.155	7/29/2004
TX1985	0.788	0.738	0.739	0.133	0.157	7/15/2004
TX1309	0.777	0.619	0.496	0.211	0.157	9/21/2004

TX2050	0.79	0.747	0.713	0.223	0.158	6/10/2004
TX640	0.769	0.724	0.715	0.123	0.159	1/13/2004
TX2462	0.778	0.761	0.744	0.096	0.16	7/20/2004
TX2295	0.754	0.701	0.682	0.341	0.164	7/7/2004
TX1347	0.767	0.711	0.692	0.227	0.164	10/19/2004
TX2424	0.786	0.726	0.725	0.333	0.166	7/15/2004
TX190	0.763	0.733	0.705	0.24	0.167	11/13/2003
TX960	0.793	0.729	0.679	0.366	0.169	8/24/2004
TX1308	0.793	0.727	0.716	0.172	0.169	10/21/2004
TX1392	0.757	0.663	0.634	0.491	0.17	10/26/2004
TX2512	0.794	0.679	0.702	0.38	0.171	7/22/2004
TX781	0.777	0.697	0.678	0.137	0.171	8/3/2004
TX2279	0.787	0.664	0.705	0.123	0.172	7/7/2004
TX9	0.762	0.608	0.591	0.091	0.173	11/4/2003
TX2488	0.75	0.671	0.643	0.393	0.173	7/20/2004
TX1453	0.753	0.707	0.721	0.211	0.175	2/4/2004
TX2296	0.78	0.702	0.692	0.201	0.175	7/7/2004
TX2179	0.769	0.634	0.61	0.164	0.177	6/29/2004
TX2310	0.778	0.641	0.541	0.312	0.177	7/28/2004
TX1429	0.756	0.693	0.698	0.167	0.178	7/22/2004
TX1670	0.729	0.724	0.732	0.252	0.183	3/12/2004
TX130	0.768	0.713	0.699	0.235	0.184	11/10/2003
TX1339	0.752	0.726	0.713	0.266	0.186	1/29/2004
TX799	0.767	0.666	0.699	0.158	0.187	8/4/2004
TX805	0.785	0.638	0.591	0.172	0.188	8/4/2004
TX2391	0.771	0.69	0.658	0.392	0.189	7/13/2004
TX1321	0.784	0.736	0.733	0.163	0.19	11/11/2004
TX1704	0.647	0.661	0.657	0.242	0.191	5/10/2004
TX2136	0.766	0.701	0.687	0.182	0.192	6/24/2004
TX237	0.79	0.753	0.742	0.524	0.196	11/18/2003
TX2474	0.786	0.73	0.741	0.226	0.197	7/20/2004
TX143	0.744	0.703	0.719	0.306	0.198	11/11/2003
TX2388	0.793	0.722	0.692	0.135	0.201	7/14/2004
TX783	0.786	0.614	0.4	0.129	0.203	8/3/2004
TX2288	0.792	0.749	0.742	0.264	0.211	7/7/2004
TX2283	0.769	0.672	0.677	0.196	0.212	7/7/2004
TX2294	0.776	0.481	0.395	0.158	0.213	7/28/2004
TX1263	0.794	0.168	0.21	0.272	0.22	7/22/2004
TX2387	0.781	0.711	0.667	0.333	0.221	7/13/2004
TX2472	0.792	0.749	0.73	0.54	0.223	7/20/2004
TX1354	0.75	0.737	0.716	0.342	0.224	1/29/2004
TX2471	0.771	0.727	0.734	0.096	0.225	7/20/2004
TX1384	0.778	0.724	0.732	0.194	0.229	2/4/2004
TX2298	0.761	0.634	0.595	0.211	0.232	7/7/2004
TX1036	0.762	0.628	0.622	0.434	0.238	8/26/2004
TX2074	0.791	0.605	0.548	0.342	0.24	6/18/2004
TX1234G	0.78	0.726	0.707	0.367	0.247	1/28/2004
TX2329	0.781	0.655	0.65	0.371	0.264	7/7/2004
TX2024	0.787	0.745	0.742	0.211	0.268	6/10/2004
TX2019	0.773	0.733	0.726	0.19	0.278	6/10/2004
TX953A	0.757	0.666	0.647	0.325	0.278	8/24/2004

TX1554	0.669	0.653	0.649	0.477	0.279	3/26/2004
TX1083	0.777	0.594	0.507	0.183	0.287	9/2/2004
TX957	0.761	0.699	0.691	0.208	0.294	8/24/2004
TX2406	0.688	0.725	0.656	0.436	0.301	7/14/2004
TX858	0.772	0.707	0.71	0.274	0.301	8/18/2004
TX2163	0.776	0.705	0.702	0.349	0.31	6/29/2004
TX2208	0.778	0.678	0.615	0.329	0.31	6/30/2004
TX2277	0.789	0.751	0.719	0.339	0.315	7/1/2004
TX1287	0.746	0.708	0.697	0.252	0.319	1/29/2004
TX2104	0.782	0.729	0.71	0.466	0.32	6/22/2004
TX2240	0.779	0.71	0.711	0.425	0.329	7/1/2004
TX1004A	0.785	0.723	0.707	0.497	0.338	8/26/2004
TX2278	0.786	0.736	0.727	0.309	0.34	7/1/2004
TX2	0.733	0.729	0.708	0.434	0.341	10/31/2003
TX113	0.755	0.71	0.695	0.136	0.343	11/7/2003
TX943	0.745	0.654	0.647	0.427	0.349	8/24/2004
TX2392	0.769	0.696	0.678	0.433	0.356	7/13/2004
TX2326	0.777	0.574	0.441	0.399	0.357	7/7/2004
TX1542	0.772	0.717	0.652	0.091	0.364	7/22/2004
TX810	0.77	0.716	0.682	0.433	0.364	8/4/2004
TX932	0.745	0.655	0.63	0.427	0.368	8/24/2004
TX1606	0.739	0.71	0.703	0.514	0.384	3/12/2004
TX2209	0.796	0.702	0.67	0.436	0.392	6/30/2004
TX68	0.78	0.758	0.743	0.364	0.394	11/7/2003
TX1514	0.783	0.699	0.63	0.727	0.397	7/22/2004
TX883	0.78	0.705	0.685	0.441	0.411	8/18/2004
TX120	0.76	0.686	0.73	0.222	0.416	1/28/2004
TX884	0.769	0.718	0.694	0.431	0.42	8/18/2004
TX948	0.771	0.715	0.688	0.455	0.421	8/24/2004
TX786	0.785	0.727	0.713	0.471	0.445	8/4/2004
TX746	0.795	0.761	0.748	0.473	0.453	8/3/2004
TX931	0.793	0.717	0.704	0.533	0.545	8/24/2004
Average	0.7625	0.6958	0.6798	0.1181	0.0670	
St. Dev.	0.0425	0.0608	0.0712	0.0863	0.0570	